

For Research Use Only

GLO1 Monoclonal antibody

Catalog Number: 68242-1-Ig



Basic Information

Catalog Number: 68242-1-Ig	GenBank Accession Number: BC001741	Purification Method: Protein A purification
Size: 150ul , Concentration: 1000 µg/ml by Nanodrop;	GeneID (NCBI): 2739	CloneNo.: 1B7A8
Source: Mouse	Full Name: glyoxalase I	Recommended Dilutions: WB 1:1000-1:6000
Isotype: IgG2a	Calculated MW: 21 kDa	
Immunogen Catalog Number: AG7314	Observed MW: 21-25 kDa	

Applications

Tested Applications: WB, ELISA	Positive Controls: WB : HEK-293 cells, LNCaP cells, Jurkat cells, HepG2 cells, K-562 cells, HSC-T6 cells
Species Specificity: Human, Rat, Mouse	

Background Information

Glo1 (glyoxalase I) is a cytosolic protein expressed in all mammalian cells. Its physiological function is the detoxification of MG (methylglyoxal), which is a potent precursor of AGEs (advanced glycation end-products). Glo1 is known to play a role in many diseases including diabetes mellitus, Alzheimer's disease, and cancer.

Storage

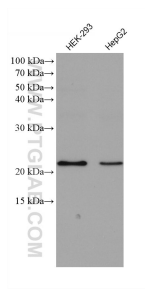
Storage:
Store at -20°C. Stable for one year after shipment.
Storage Buffer:
PBS with 0.02% sodium azide and 50% glycerol pH 7.3.
Aliquoting is unnecessary for -20°C storage

*** 20ul sizes contain 0.1% BSA

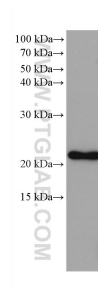
For technical support and original validation data for this product please contact:
T: 1 (888) 4PTGLAB (1-888-478-4522) (toll free in USA), or 1(312) 455-8498 (outside USA) E: proteintech@ptglab.com
W: ptglab.com

This product is exclusively available under Proteintech Group brand and is not available to purchase from any other manufacturer.

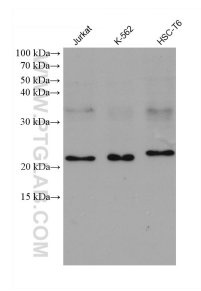
Selected Validation Data



Various lysates were subjected to SDS PAGE followed by western blot with 68242-1-Ig (GLO 1 antibody) at dilution of 1:3000 incubated at room temperature for 1.5 hours.



LNCaP cells were subjected to SDS PAGE followed by western blot with 68242-1-Ig (GLO 1 antibody) at dilution of 1:3000 incubated at room temperature for 1.5 hours.



Various lysates were subjected to SDS PAGE followed by western blot with 68242-1-Ig (GLO1 antibody) at dilution of 1:3000 incubated at room temperature for 1.5 hours.