

For Research Use Only

PSMA2 Monoclonal antibody

Catalog Number: 68240-1-Ig



Basic Information

Catalog Number: 68240-1-Ig	GenBank Accession Number: BC047697	Purification Method: Protein G purification
Size: 150ul , Concentration: 1000 µg/ml by Nanodrop;	GeneID (NCBI): 5683	CloneNo.: 2H4A10
Source: Mouse	Full Name: proteasome (prosome, macropain) subunit, alpha type, 2	Recommended Dilutions: WB 1:1000-1:4000 IHC 1:50-1:500
IsoType: IgG1	Calculated MW: 26 kDa	
Immunogen Catalog Number: AG5837	Observed MW: 26 kDa	

Applications

Tested Applications:

IHC, WB, ELISA

Species Specificity:

Human, mouse, pig, rat

Note-IHC: suggested antigen retrieval with TE buffer pH 9.0; (*) Alternatively, antigen retrieval may be performed with citrate buffer pH 6.0

Positive Controls:

WB: U2OS cells, A431 cells, HEK-293 cells, HepG2 cells, HSC-T6 cells, NIH/3T3 cells, pig heart tissue, rat heart tissue, mouse heart tissue

IHC: human cervical cancer tissue,

Background Information

PSMA2 (Proteasome subunit alpha type-2) is the essential subunit that contributes to the complete assembly of 20S proteasome complex, involved in the proteolytic degradation of most intracellular proteins. It is required in spermatogenesis and generation of a subset of MHC class I-presented antigenic peptides (PMID: 34711951, PMID: 27342858). Dysregulation of PSMA2 degradation leads to tumorigenesis including cervical cancer (PMID:33684886).

Storage

Storage:

Store at -20°C. Stable for one year after shipment.

Storage Buffer:

PBS with 0.02% sodium azide and 50% glycerol pH 7.3.

Aliquoting is unnecessary for -20°C storage

***** 20ul sizes contain 0.1% BSA**

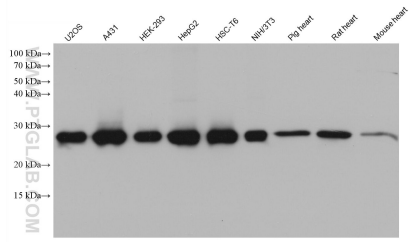
For technical support and original validation data for this product please contact:

T: 1 (888) 4PTGLAB (1-888-478-4522) (toll free in USA), or 1(312) 455-8498 (outside USA)

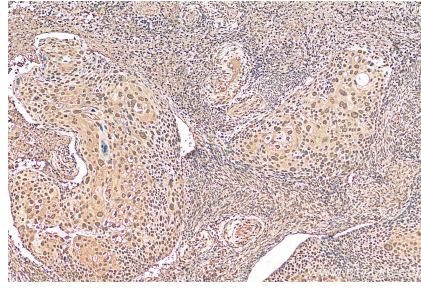
E: proteintech@ptglab.com
W: ptglab.com

This product is exclusively available under Proteintech Group brand and is not available to purchase from any other manufacturer.

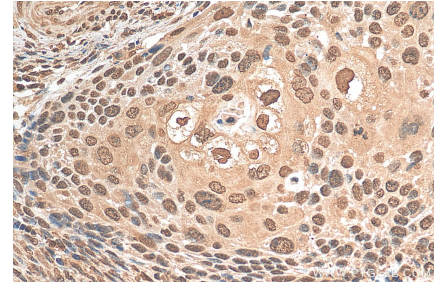
Selected Validation Data



Various lysates were subjected to SDS PAGE followed by western blot with 68240-1-Ig (PSMA2 antibody) at dilution of 1:2000 incubated at room temperature for 1.5 hours.



Immunohistochemical analysis of paraffin-embedded human cervical cancer tissue slide using 68240-1-Ig (PSMA2 antibody) at dilution of 1:200 (under 10x lens). Heat mediated antigen retrieval with Tris-EDTA buffer (pH 9.0).



Immunohistochemical analysis of paraffin-embedded human cervical cancer tissue slide using 68240-1-Ig (PSMA2 antibody) at dilution of 1:200 (under 40x lens). Heat mediated antigen retrieval with Tris-EDTA buffer (pH 9.0).