

For Research Use Only

GPSM1 Monoclonal antibody

Catalog Number: 68233-1-Ig



Basic Information

Catalog Number: 68233-1-Ig	GenBank Accession Number: BC017353	Purification Method: Protein G purification
Size: 150ul , Concentration: 1000 µg/ml by Nanodrop;	GeneID (NCBI): 26086	CloneNo.: 3A7A2
Source: Mouse	Full Name: G-protein signaling modulator 1 (AGS3-like, C. elegans)	Recommended Dilutions: WB 1:2000-1:10000 IF 1:200-1:800
Isotype: IgG1	Calculated MW: 652 aa, 72 kDa	
Immunogen Catalog Number: AG18773	Observed MW: 75 kDa	

Applications

Tested Applications:
IF, WB, ELISA

Species Specificity:
Human, mouse

Positive Controls:

WB : LNCaP cells, HeLa cells, HEK-293 cells, Jurkat cells, HSC-T6 cells, NIH/3T3 cells, 4T1 cells

IF : PC-12 cells,

Background Information

GPSM1, also named as AGS3, is a receptor-independent G protein activator that has been implicated in multiple biological events such as brain development, neuroplasticity and addiction, cardiac function, Golgi structure/function, macroautophagy and metabolism. It contains seven tetratricopeptide repeats in its N-terminal half and four G-protein regulatory (GPR) motifs in its C-terminal half. It has been shown that AGS3 could regulate the orientation of the mitotic spindle, cAMP production, membrane protein transport, and asymmetric cell division by binding preferentially to inactive Gai/o subunits complexed with guanine dinucleotide phosphate (GDP) at multiple G-protein regulatory or GoLoco motif repeats. It also plays an important anti-apoptotic role through enhancing the phosphorylation of cyclic AMP response element-binding protein (p-CREB).

Storage

Storage:
Store at -20°C. Stable for one year after shipment.

Storage Buffer:
PBS with 0.02% sodium azide and 50% glycerol pH 7.3.

Aliquoting is unnecessary for -20°C storage

*** 20ul sizes contain 0.1% BSA

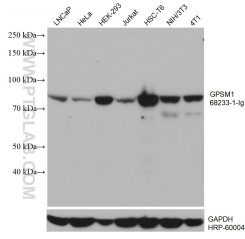
For technical support and original validation data for this product please contact:

T: 1 (888) 4PTGLAB (1-888-478-4522) (toll free
in USA), or 1(312) 455-8498 (outside USA)

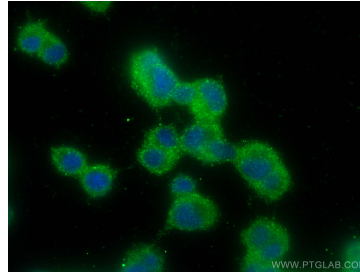
E: proteintech@ptglab.com
W: ptglab.com

This product is exclusively available under Proteintech Group brand and is not available to purchase from any other manufacturer.

Selected Validation Data



Various lysates were subjected to SDS PAGE followed by western blot with 68233-1-Ig (GP5M1 antibody) at dilution of 1:5000 incubated at room temperature for 1.5 hours. The membrane was stripped and reblotted with HRP-conjugated GAPDH Monoclonal antibody (HRP-60004) as loading control.



Immunofluorescent analysis of (-20°C Ethanol) fixed PC-12 cells using GP5M1 antibody (68233-1-Ig, Clone: 3A7A2) at dilution of 1:400 and CoraLite® 488-Conjugated AffiniPure Goat Anti-Mouse IgG(H+L).