

For Research Use Only

CAP1 Monoclonal antibody

Catalog Number: 68207-1-Ig **3 Publications**



Basic Information

Catalog Number: 68207-1-Ig	GenBank Accession Number: BC013963	Purification Method: Protein G purification
Size: 150ul , Concentration: 1000 ug/ml by Nanodrop;	GeneID (NCBI): 10487	CloneNo.: 2H3A10
Source: Mouse	UNIPROT ID: Q01518	Recommended Dilutions: WB: 1:5000-1:50000 IHC: 1:1000-1:4000 IF/ICC: 1:400-1:1600
Isotype: IgG1	Full Name: CAP, adenylate cyclase-associated protein 1 (yeast)	
Immunogen Catalog Number: AG8876	Calculated MW: 475 aa, 52 kDa	
	Observed MW: 52 kDa	

Applications

Tested Applications: WB, IHC, IF/ICC, ELISA	Positive Controls:
Cited Applications: WB, IF	WB : mouse testis tissue, pig lung tissue, human placenta tissue, mouse lung tissue, rat lung tissue, rabbit lung tissue
Species Specificity: Human, mouse, rat, pig, rabbit	IHC : human colon cancer tissue, mouse testis tissue
Cited Species: human	IF/ICC : HepG2 cells, HeLa cells

Note-IHC: suggested antigen retrieval with TE buffer pH 9.0; (*) Alternatively, antigen retrieval may be performed with citrate buffer pH 6.0

Background Information

CAP1, also known as CAP, CAP1-PEN, belongs to the CAP family and contains 1 C-CAP/cofactor C-like domain. CAP1 binds to monomeric actin and regulates the actin cytoskeleton to control cell size, adhesion, and migration (PMID: 23737525). CAP1 also functions as a receptor for inflammatory cytokine resistin (PMID: 24606903). CAP1 is an abundant and ubiquitously expressed protein. Western blot analysis detected CAP1 at an apparent molecular mass of 52 kDa.

Notable Publications

Author	Pubmed ID	Journal	Application
Jie Yang	40026213	J Neurochem	WB
Nur Jury-Garfe	39102080	Acta Neuropathol	IF
Guilin Li	38593502	Int Immunopharmacol	FC

Storage

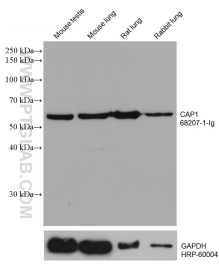
Storage:
Store at -20°C. Stable for one year after shipment.
Storage Buffer:
PBS with 0.02% sodium azide and 50% glycerol, pH7.3
Aliquoting is unnecessary for -20°C storage

*** 20ul sizes contain 0.1% BSA

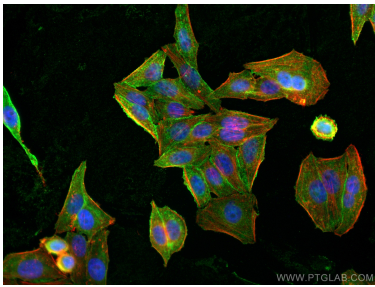
For technical support and original validation data for this product please contact:
T: 1 (888) 4PTGLAB (1-888-478-4522) (toll free in USA), or 1(312) 455-8498 (outside USA)
E: proteintech@ptglab.com
W: ptglab.com

This product is exclusively available under Proteintech Group brand and is not available to purchase from any other manufacturer.

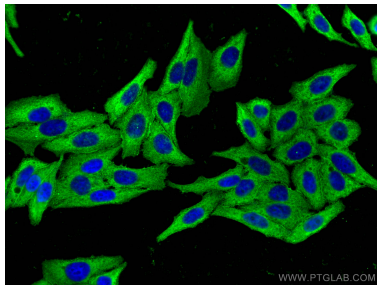
Selected Validation Data



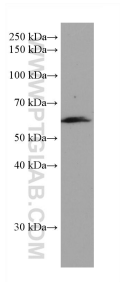
Various lysates were subjected to SDS PAGE followed by western blot with 68207-1-Ig (CAP1 antibody) at dilution of 1:20000 incubated at room temperature for 1.5 hours. The membrane was stripped and reblotted with HRP-conjugated GAPDH Monoclonal antibody (HRP-60004) as loading control.



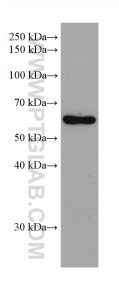
Immunofluorescent analysis of (4% PFA) fixed HepG2 cells using CAP1 antibody (68207-1-Ig, Clone: 2H3A10) at dilution of 1:800 and CoraLite®488-Conjugated Goat Anti-Mouse IgG(H+L), CL594-Phalloidin (red).



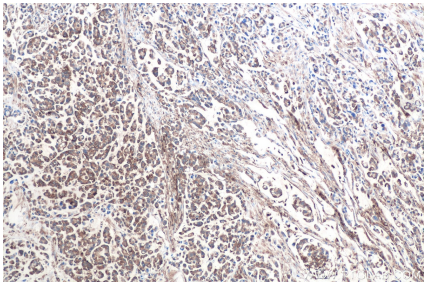
Immunofluorescent analysis of (-20°C Ethanol) fixed HepG2 cells using CAP1 antibody (68207-1-Ig, Clone: 2H3A10) at dilution of 1:800 and CoraLite®488-Conjugated Goat Anti-Mouse IgG(H+L).



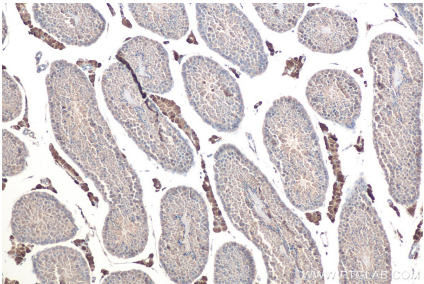
pig lung tissue were subjected to SDS PAGE followed by western blot with 68207-1-Ig (CAP1 antibody) at dilution of 1:20000 incubated at room temperature for 1.5 hours.



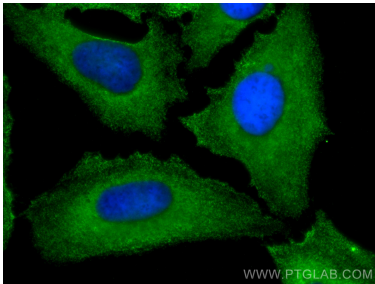
human placenta tissue were subjected to SDS PAGE followed by western blot with 68207-1-Ig (CAP1 antibody) at dilution of 1:20000 incubated at room temperature for 1.5 hours.



Immunohistochemical analysis of paraffin-embedded human colon cancer tissue slide using 68207-1-Ig (CAP1 antibody) at dilution of 1:2000 (under 10x lens). Heat mediated antigen retrieval with Tris-EDTA buffer (pH 9.0).



Immunohistochemical analysis of paraffin-embedded mouse testis tissue slide using 68207-1-Ig (CAP1 antibody) at dilution of 1:4000 (under 10x lens). Heat mediated antigen retrieval with Tris-EDTA buffer (pH 9.0).



Immunofluorescent analysis of (-20°C Methanol) fixed HeLa cells using CAP1 antibody (68207-1-Ig, Clone: 2H3A10) at dilution of 1:400 and CoraLite®488-Conjugated Goat Anti-Mouse IgG(H+L).