

For Research Use Only

# NSFL1C Monoclonal antibody

Catalog Number: 68182-1-Ig



## Basic Information

<b>Catalog Number:</b> 68182-1-Ig	<b>GenBank Accession Number:</b> BC002801	<b>Purification Method:</b> Protein G purification
<b>Size:</b> 150ul , Concentration: 1000 µg/ml by Nanodrop;	<b>GeneID (NCBI):</b> 55968	<b>CloneNo.:</b> 1F12E12
<b>Source:</b> Mouse	<b>Full Name:</b> NSFL1 (p97) cofactor (p47)	<b>Recommended Dilutions:</b> WB 1:5000-1:50000 IHC 1:500-1:2000 IF 1:400-1:1600
<b>Isotype:</b> IgG1	<b>Calculated MW:</b> 41 kDa	
<b>Immunogen Catalog Number:</b> AG8040	<b>Observed MW:</b> 41 kDa	

## Applications

### Tested Applications:

IF, IHC, WB, ELISA

### Species Specificity:

Human, Mouse, Rat, Pig

**Note-IHC: suggested antigen retrieval with TE buffer pH 9.0; (\*) Alternatively, antigen retrieval may be performed with citrate buffer pH 6.0**

### Positive Controls:

**WB :** rat brain tissue, U2OS cells, mouse brain tissue, A549 cells, A431 cells, LNCaP cells, HeLa cells, Jurkat cells, pig brain tissue

**IHC :** human lung cancer tissue,

**IF :** A431 cells,

## Background Information

### Storage

#### Storage:

Store at -20°C. Stable for one year after shipment.

#### Storage Buffer:

PBS with 0.02% sodium azide and 50% glycerol pH 7.3.

Aliquoting is unnecessary for -20°C storage

**\*\*\* 20ul sizes contain 0.1%BSA**

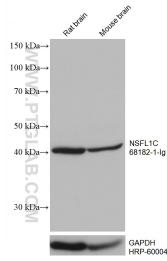
For technical support and original validation data for this product please contact:

T: 1 (888) 4PTGLAB (1-888-478-4522) (toll free in USA), or 1(312) 455-8498 (outside USA)

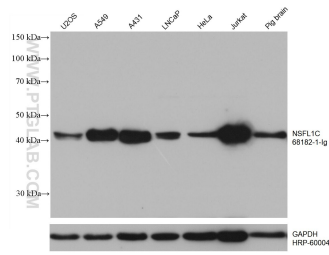
E: proteintech@ptglab.com  
W: ptglab.com

**This product is exclusively available under Proteintech Group brand and is not available to purchase from any other manufacturer.**

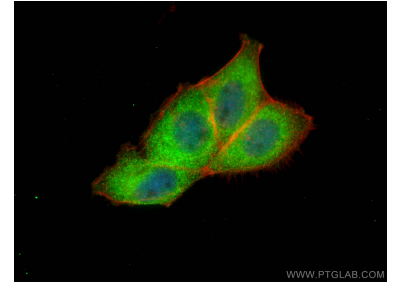
## Selected Validation Data



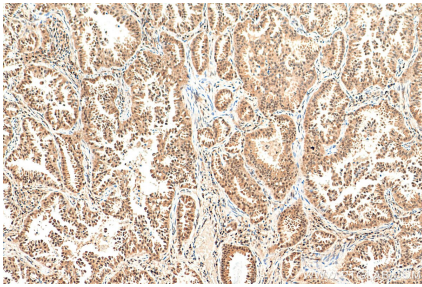
Various lysates were subjected to SDS PAGE followed by western blot with 68182-1-Ig (NSFL1C antibody) at dilution of 1:10000 incubated at room temperature for 1.5 hours. The membrane was stripped and rebotted with HRP-conjugated GAPDH Monoclonal antibody (HRP-60004) as loading control.



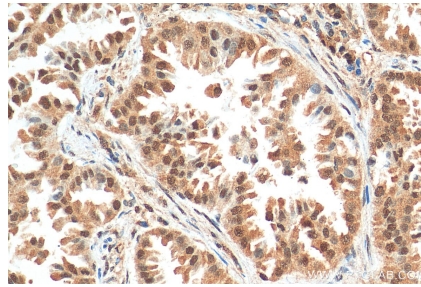
Various lysates were subjected to SDS PAGE followed by western blot with 68182-1-Ig (NSFL1C antibody) at dilution of 1:10000 incubated at room temperature for 1.5 hours. The membrane was stripped and rebotted with HRP-conjugated GAPDH Monoclonal antibody (HRP-60004) as loading control.



Immunofluorescent analysis of (4% PFA) fixed A431 cells using NSFL1C antibody (68182-1-Ig, Clone: 1F12E12) at dilution of 1:800 and CoraLite@488-Conjugated AffiniPure Goat Anti-Mouse IgG(H+L), CL594-Phalloidin (red).



Immunohistochemical analysis of paraffin-embedded human lung cancer tissue slide using 68182-1-Ig (NSFL1C antibody) at dilution of 1:1000 (under 10x lens). Heat mediated antigen retrieval with Tris-EDTA buffer (pH 9.0).



Immunohistochemical analysis of paraffin-embedded human lung cancer tissue slide using 68182-1-Ig (NSFL1C antibody) at dilution of 1:1000 (under 40x lens). Heat mediated antigen retrieval with Tris-EDTA buffer (pH 9.0).