

For Research Use Only

# ENOPH1 Monoclonal antibody

Catalog Number: 68179-1-Ig



## Basic Information

<b>Catalog Number:</b> 68179-1-Ig	<b>GenBank Accession Number:</b> BC065815	<b>Purification Method:</b> Protein G purification
<b>Size:</b> 150ul , Concentration: 1000 µg/ml by Nanodrop;	<b>GeneID (NCBI):</b> 58478	<b>CloneNo.:</b> 1F1E11
<b>Source:</b> Mouse	<b>Full Name:</b> enolase-phosphatase 1	<b>Recommended Dilutions:</b> WB 1:5000-1:50000
<b>Isotype:</b> IgG1	<b>Calculated MW:</b> 261 aa, 29 kDa	
<b>Immunogen Catalog Number:</b> AG12553	<b>Observed MW:</b> 29-35 kDa	

## Applications

**Tested Applications:**  
WB, ELISA

**Species Specificity:**  
Human, Mouse, Rat, Rabbit, Pig

**Positive Controls:**

**WB :** LNCaP cells, HeLa cells, HepG2 cells, Jurkat cells,  
pig brain tissue, rabbit brain tissue, rat brain tissue,  
mouse brain tissue

## Background Information

ENOPH1, also named as MASA and MSTP145, belongs to the HAD-like hydrolase superfamily and MasA/MtnC family. ENOPH1 is a newly identified enzyme involved in L-methionine biosynthesis, which is associated with anxiety and depression. Studies have shown that ENOPH1 plays a crucial role in promoting the proliferation and migration of glioma cells (PMID: 32654229). ENOPH1 has 2 isoforms with the molecular mass of 13 and 29 kDa.

## Storage

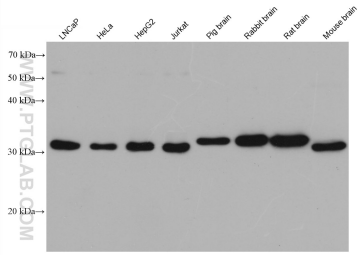
**Storage:**  
Store at -20°C. Stable for one year after shipment.  
**Storage Buffer:**  
PBS with 0.02% sodium azide and 50% glycerol pH 7.3.  
**Aliquoting is unnecessary for -20°C storage**

**\*\*\* 20ul sizes contain 0.1% BSA**

For technical support and original validation data for this product please contact:  
T: 1 (888) 4PTGLAB (1-888-478-4522) (toll free in USA), or 1(312) 455-8498 (outside USA)  
E: proteintech@ptglab.com  
W: ptglab.com

**This product is exclusively available under Proteintech Group brand and is not available to purchase from any other manufacturer.**

## Selected Validation Data



Various lysates were subjected to SDS PAGE followed by western blot with 68179-1-Ig (ENOPH1 antibody) at dilution of 1:20000 incubated at room temperature for 1.5 hours. The membrane was stripped and reblotted with HRP-conjugated Beta Actin Monoclonal antibody (HRP-66009) as loading control.