

For Research Use Only

STIP1 Monoclonal antibody

Catalog Number: 68155-1-Ig



Basic Information

Catalog Number: 68155-1-Ig	GenBank Accession Number: BC002987	Purification Method: Protein G purification
Size: 150ul , Concentration: 1000 µg/ml by Nanodrop;	GeneID (NCBI): 10963	CloneNo.: 1B5H2
Source: Mouse	UNIPROT ID: P31948	Recommended Dilutions: WB 1:5000-1:50000
Isotype: IgG1	Full Name: stress-induced-phosphoprotein 1	IP 0.5-4.0 ug for 1.0-3.0 mg of total protein lysate
Immunogen Catalog Number: AG7851	Calculated MW: 63 kDa	IHC 1:500-1:2000
	Observed MW: 61 kDa	IF 1:400-1:1600

Applications

Tested Applications:
IF, IHC, IP, WB, ELISA

Species Specificity:
Human, mouse, rat

Note-IHC: suggested antigen retrieval with TE buffer pH 9.0; (*) Alternatively, antigen retrieval may be performed with citrate buffer pH 6.0

Positive Controls:

WB: A549 cells, LNCaP cells, HeLa cells, HepG2 cells, Jurkat cells, K-562 cells, HSC-T6 cells, NIH/3T3 cells

IP: HeLa cells, Jurkat cells

IHC: mouse liver tissue,

IF: HeLa cells,

Background Information

STIP1, also named as Hop and NY-REN-11. Its expression is low in the hypothalamus. STIP1 has some isoforms with MW 62 kDa, 68 kDa and 59 kDa. Acts as a co-chaperone for HSP90AA1. Mediates the association of the molecular chaperones HSPA8/HSC70 and HSP90. Probably forms a complex composed of chaperones HSP90 and HSP70, co-chaperones STIP1/HOP, CDC37, PPP5C, PTGES3/p23, TSC1 and client protein TSC2. STIP1 interacts with PACRG, EEF1AKMT3, FLCN, FNIP1 and FNIP2 (PMID:24880080).

Storage

Storage:

Store at -20°C. Stable for one year after shipment.

Storage Buffer:

PBS with 0.02% sodium azide and 50% glycerol pH 7.3.

Aliquoting is unnecessary for -20°C storage

*** 20ul sizes contain 0.1% BSA

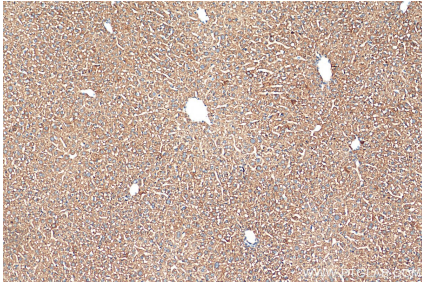
For technical support and original validation data for this product please contact:

T: 1 (888) 4PTGLAB (1-888-478-4522) (toll free in USA), or 1(312) 455-8498 (outside USA)

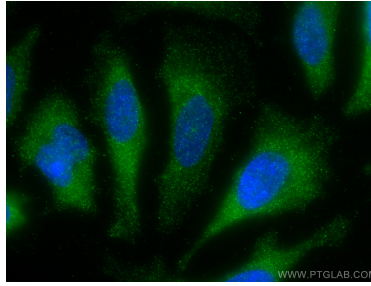
E: proteintech@ptglab.com
W: ptglab.com

This product is exclusively available under Proteintech Group brand and is not available to purchase from any other manufacturer.

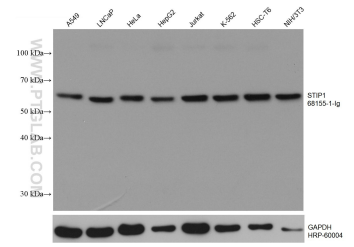
Selected Validation Data



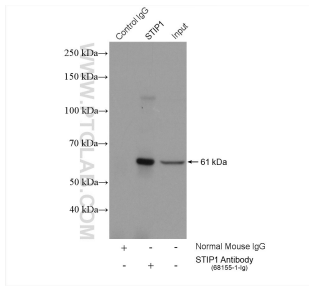
Immunohistochemical analysis of paraffin-embedded mouse liver tissue slide using 68155-1-Ig (STIP1 antibody) at dilution of 1:1000 (under 10x lens). Heat mediated antigen retrieval with Tris-EDTA buffer (pH 9.0).



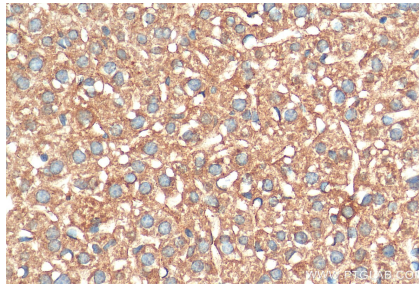
Immunofluorescent analysis of (-20°C Methanol) fixed HeLa cells using STIP1 antibody (68155-1-Ig, Clone: 1B5H2) at dilution of 1:800 and CoraLite®488-Conjugated AffiniPure Goat Anti-Mouse IgG(H+L).



Various lysates were subjected to SDS PAGE followed by western blot with 68155-1-Ig (STIP1 antibody) at dilution of 1:10000 incubated at room temperature for 1.5 hours. The membrane was stripped and reblotted with HRP-conjugated GAPDH Monoclonal antibody (HRP-60004) as loading control.



IP result of anti-STIP1 (IP:68155-1-Ig, 5ug; Detection:68155-1-Ig 1:1000) with HeLa cells lysate 1880 ug.



Immunohistochemical analysis of paraffin-embedded mouse liver tissue slide using 68155-1-Ig (STIP1 antibody) at dilution of 1:1000 (under 40x lens). Heat mediated antigen retrieval with Tris-EDTA buffer (pH 9.0).