

For Research Use Only

DPEP1 Monoclonal antibody

Catalog Number: 68081-1-Ig



Basic Information

Catalog Number: 68081-1-Ig	GenBank Accession Number: BC017023	Purification Method: Protein A purification
Size: 150ul , Concentration: 1000 µg/ml by Nanodrop;	GeneID (NCBI): 1800	CloneNo.: 2B4F4
Source: Mouse	Full Name: dipeptidase 1 (renal)	Recommended Dilutions: WB 1:5000-1:50000 IHC 1:500-1:2000 IF 1:200-1:800
Isotype: IgG2a	Calculated MW: 411 aa, 46 kDa	
Immunogen Catalog Number: AG14591	Observed MW: 46 kDa	

Applications

Tested Applications:

IF, IHC, WB, ELISA

Species Specificity:

Human, Mouse, Rat, Pig

**Note-IHC: suggested antigen retrieval with
TE buffer pH 9.0; (*) Alternatively, antigen
retrieval may be performed with citrate
buffer pH 6.0**

Positive Controls:

WB : human testis tissue, rabbit kidney tissue, pig
pancreas tissue, rat pancreas tissue, HepG2 cells

IHC : human kidney tissue,

IF : mouse kidney tissue,

Background Information

Storage

Storage:

Store at -20°C. Stable for one year after shipment.

Storage Buffer:

PBS with 0.02% sodium azide and 50% glycerol pH 7.3.

Aliquoting is unnecessary for -20°C storage

*** 20ul sizes contain 0.1% BSA

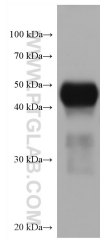
For technical support and original validation data for this product please contact:

T: 1 (888) 4PTGLAB (1-888-478-4522) (toll free
in USA), or 1(312) 455-8498 (outside USA)

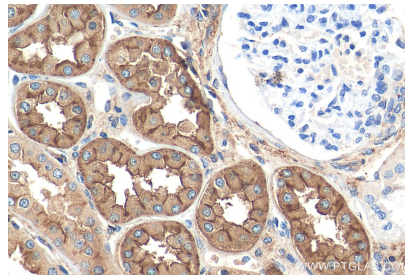
E: proteintech@ptglab.com
W: ptglab.com

This product is exclusively available under Proteintech
Group brand and is not available to purchase from any
other manufacturer.

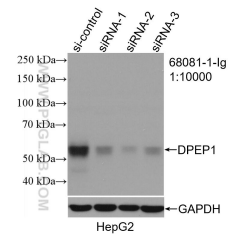
Selected Validation Data



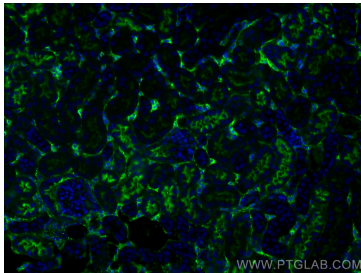
human testis tissue were subjected to SDS PAGE followed by western blot with 68081-1-Ig (DPEP1 antibody) at dilution of 1:10000 incubated at room temperature for 1.5 hours.



Immunohistochemical analysis of paraffin-embedded human kidney tissue slide using 68081-1-Ig (DPEP1 antibody) at dilution of 1:1000 (under 40x lens). Heat mediated antigen retrieval with Tris-EDTA buffer (pH 9.0).



WB result of DPEP1 antibody (68081-1-Ig; 1:10000; incubated at room temperature for 1.5 hours) with sh-Control and sh-DPEP1 transfected HepG2 cells.



Immunofluorescent analysis of (4% PFA) fixed mouse kidney tissue using DPEP1 antibody (68081-1-Ig, Clone: 2B4F4) at dilution of 1:400 and CoraLite®488-Conjugated AffiniPure Goat Anti-Mouse IgG(H+L).