

For Research Use Only

FATP2 Monoclonal antibody

Catalog Number: 68074-1-Ig



Basic Information

Catalog Number: 68074-1-Ig	GenBank Accession Number: BC057770	Purification Method: Protein A purification
Size: 150ul , Concentration: 1000 µg/ml by Nanodrop;	GeneID (NCBI): 11001	CloneNo.: 2C10D7
Source: Mouse	Full Name: solute carrier family 27 (fatty acid transporter), member 2	Recommended Dilutions: WB 1:5000-1:50000 IHC 1:250-1:1000
Isotype: IgG1	Calculated MW: 567 aa, 65 kDa	
Immunogen Catalog Number: AG5390	Observed MW: 70 kDa	

Applications

Tested Applications:

IHC, WB, ELISA

Species Specificity:

Human, rat

Note-IHC: suggested antigen retrieval with TE buffer pH 9.0; (*) Alternatively, antigen retrieval may be performed with citrate buffer pH 6.0

Positive Controls:

WB: A549 cells, HepG2 cells, rat liver tissue, LNCaP cells, HeLa cells

IHC: human kidney tissue,

Background Information

FATP2 is a member of the FATP family which functions in lipid and bile metabolism. It is a 70-kDa protein predominantly expressed in liver and kidney. Kidney FATP2 is localized exclusively to proximal tubule epithelial cells along the apical but not the basolateral membrane, and regulates lipopapoptosis. FATP2 is involved in metabolism-related diseases including nonalcoholic fatty liver disease (NAFLD) and type 2 diabetes mellitus (T2DM), and is a potential clinical biomarker and therapeutic target.

Storage

Storage:

Store at -20°C. Stable for one year after shipment.

Storage Buffer:

PBS with 0.02% sodium azide and 50% glycerol pH 7.3.

Aliquoting is unnecessary for -20°C storage

*** 20ul sizes contain 0.1% BSA

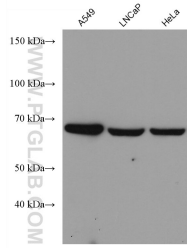
For technical support and original validation data for this product please contact:

T: 1 (888) 4PTGLAB (1-888-478-4522) (toll free in USA), or 1(312) 455-8498 (outside USA)

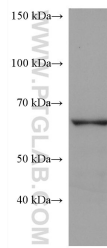
E: proteintech@ptglab.com
W: ptglab.com

This product is exclusively available under Proteintech Group brand and is not available to purchase from any other manufacturer.

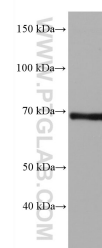
Selected Validation Data



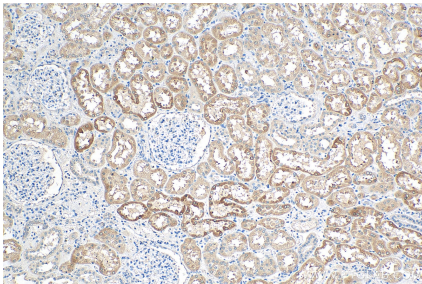
Various lysates were subjected to SDS PAGE followed by western blot with 68074-1-Ig (SLC27A2 antibody) at dilution of 1:10000 incubated at room temperature for 1.5 hours.



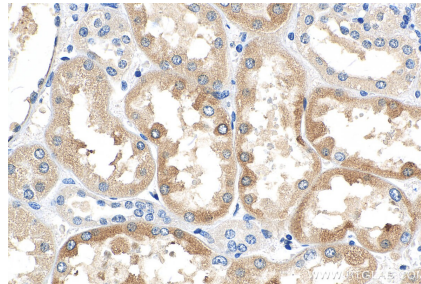
HepG2 cells were subjected to SDS PAGE followed by western blot with 68074-1-Ig (SLC27A2 antibody) at dilution of 1:10000 incubated at room temperature for 1.5 hours.



rat liver tissue were subjected to SDS PAGE followed by western blot with 68074-1-Ig (FATP2 antibody) at dilution of 1:1000 incubated at room temperature for 1.5 hours.



Immunohistochemical analysis of paraffin-embedded human kidney tissue slide using 68074-1-Ig (FATP2 antibody) at dilution of 1:500 (under 10x lens). Heat mediated antigen retrieval with Tris-EDTA buffer (pH 9.0).



Immunohistochemical analysis of paraffin-embedded human kidney tissue slide using 68074-1-Ig (FATP2 antibody) at dilution of 1:500 (under 40x lens). Heat mediated antigen retrieval with Tris-EDTA buffer (pH 9.0).