

For Research Use Only

# HSPB11 Monoclonal antibody

Catalog Number: 68059-1-Ig



## Basic Information

<b>Catalog Number:</b> 68059-1-Ig	<b>GenBank Accession Number:</b> BC005245	<b>Purification Method:</b> Protein A purification
<b>Size:</b> 150ul , Concentration: 1000 µg/ml by Nanodrop;	<b>GeneID (NCBI):</b> 51668	<b>CloneNo.:</b> 2D11B3
<b>Source:</b> Mouse	<b>Full Name:</b> heat shock protein family B (small), member 11	<b>Recommended Dilutions:</b> WB 1:5000-1:50000
<b>Isotype:</b> IgG2a	<b>Calculated MW:</b> 144 aa, 16 kDa	
<b>Immunogen Catalog Number:</b> AG8804	<b>Observed MW:</b> 20 kDa	

## Applications

<b>Tested Applications:</b> WB, ELISA	<b>Positive Controls:</b> WB : NCCIT cells, LNCaP cells, HeLa cells, HEK-293 cells, T-47D cells, Jurkat cells, K-562 cells
<b>Species Specificity:</b> Human	

## Background Information

HSPB11 (Heat shock protein beta-11), also known as IFT25, was originally identified as a small heat shock protein. Recently it has been identified as a component of IFT complex B. It has been demonstrated that IFT25 is not required for ciliary assembly but is required for proper Hedgehog signaling, which in mammals occurs within cilia. Cilia lacking IFT25 have defects in the signal-dependent transport of multiple Hedgehog components and fail to activate the pathway upon stimulation.

## Storage

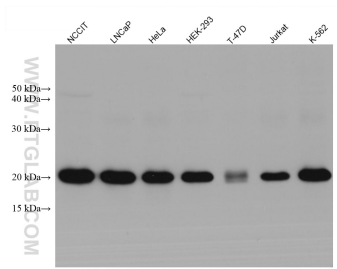
**Storage:**  
Store at -20°C.  
**Storage Buffer:**  
PBS with 0.02% sodium azide and 50% glycerol pH 7.3.  
Aliquoting is unnecessary for -20°C storage

\*\*\* 20ul sizes contain 0.1% BSA

For technical support and original validation data for this product please contact:  
T: 1 (888) 4PTGLAB (1-888-478-4522) (toll free in USA), or 1(312) 455-8498 (outside USA) E: proteintech@ptglab.com W: ptglab.com

This product is exclusively available under Proteintech Group brand and is not available to purchase from any other manufacturer.

## Selected Validation Data



Various lysates were subjected to SDS PAGE followed by western blot with 68059-1-Ig (HSPB11 antibody) at dilution of 1:10000 incubated at room temperature for 1.5 hours.