

For Research Use Only

SFXN1 Monoclonal antibody

Catalog Number: 68024-1-Ig



Basic Information

Catalog Number: 68024-1-Ig	GenBank Accession Number: BC020517	Purification Method: Protein G purification
Size: 150ul , Concentration: 1000 µg/ml by Nanodrop;	GeneID (NCBI): 94081	CloneNo.: 2D9F1
Source: Mouse	Full Name: sideroflexin 1	Recommended Dilutions: WB 1:5000-1:50000 IF 1:200-1:800
Isotype: IgG1	Calculated MW: 35.6 kDa	
Immunogen Catalog Number: AG2985	Observed MW: 32 kDa	

Applications

Tested Applications:

IF, WB, ELISA

Species Specificity:

Human, Rat, Mouse

Positive Controls:

WB : PC-3 cells, LNCaP cells, MCF-7 cells, HepG2 cells, HeLa cells, Jurkat cells, MOLT-4 cells, Rat brain tissue, Mouse brain tissue

IF : MCF-7 cells,

Background Information

SFXN1, the founding member of the SLC56 family, was identified by positional cloning of the mutation in the flexed-tail mouse model with sideroblastic anemia. SFXN1 was recently identified as a mitochondrial serine transporter essential for one-carbon (1C) metabolism, a process in which folate species are generated and used in biosynthetic pathways required for cell proliferation. In HEK293 cells, SFXN1 is the most abundant isoform among the SFXNs.

Storage

Storage:

Store at -20°C. Stable for one year after shipment.

Storage Buffer:

PBS with 0.02% sodium azide and 50% glycerol pH 7.3.

Aliquoting is unnecessary for -20°C storage

*** 20ul sizes contain 0.1% BSA

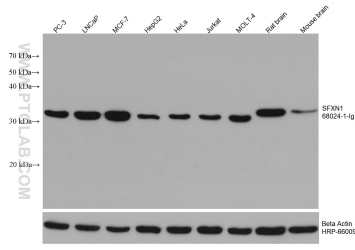
For technical support and original validation data for this product please contact:

T: 1 (888) 4PTGLAB (1-888-478-4522) (toll free
in USA), or 1(312) 455-8498 (outside USA)

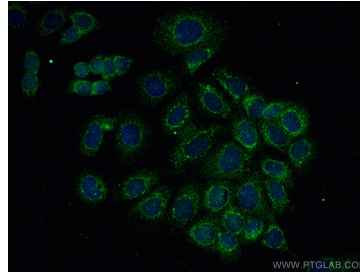
E: proteintech@ptglab.com
W: ptglab.com

This product is exclusively available under Proteintech Group brand and is not available to purchase from any other manufacturer.

Selected Validation Data



Various lysates were subjected to SDS PAGE followed by western blot with 68024-1-Ig (SFXN1 antibody) at dilution of 1:10000 incubated at room temperature for 1.5 hours. The membrane was stripped and reblotted with HRP-conjugated Beta Actin Monoclonal antibody (HRP-66009) as loading control.



Immunofluorescent analysis of (-20°C Methanol) fixed MCF-7 cells using SFXN1 antibody (68024-1-Ig, Clone: 2D9F1) at dilution of 1:400 and CoraLite® 488-Conjugated AffiniPure Goat Anti-Mouse IgG(H+L).