

For Research Use Only

# CRMP1 Monoclonal antibody

Catalog Number: 68021-1-Ig



## Basic Information

<b>Catalog Number:</b> 68021-1-Ig	<b>GenBank Accession Number:</b> BC000252	<b>Purification Method:</b> Protein A purification
<b>Size:</b> 150ul , Concentration: 500 µg/ml by Nanodrop;	<b>GeneID (NCBI):</b> 1400	<b>CloneNo.:</b> 2F4G5
<b>Source:</b> Mouse	<b>Full Name:</b> collapsin response mediator protein 1	<b>Recommended Dilutions:</b> WB 1:5000-1:50000 IHC 1:5000-1:20000
<b>Isotype:</b> IgG2a	<b>Calculated MW:</b> 62 kDa	
<b>Immunogen Catalog Number:</b> AG30090	<b>Observed MW:</b> 62 kDa	

## Applications

### Tested Applications:

IHC, WB, ELISA

### Species Specificity:

Mouse, Rat, Rabbit, Pig, Chicken

**Note-IHC: suggested antigen retrieval with TE buffer pH 9.0; (\*) Alternatively, antigen retrieval may be performed with citrate buffer pH 6.0**

### Positive Controls:

**WB :** mouse cerebellum tissue, pig brain tissue, rabbit brain tissue, rat brain tissue, mouse brain tissue, chicken brain tissue, pig cerebellum tissue, rabbit cerebellum tissue, rat cerebellum tissue

**IHC :** mouse brain tissue, human lung cancer tissue

## Background Information

CRMP1 (Collapsin response mediator protein 1) is also named as DPYSL1, ULIP3, DRP-1 and belongs to the collapsin response mediator protein family, which are a family of five cytoplasmic proteins predominantly expressed in the developing nervous system. CRMP1, the predicted 62 kDa protein and its 74 kDa isoform corresponding to its N-terminal splice variant already described for embryonic, neonatal, and adult brain of the rat are evidenced in the cortex of adult mouse (PMID:15834957). This protein is involved in invasion, and aggressiveness of prolactin pituitary tumors.

## Storage

### Storage:

Store at -20°C.

### Storage Buffer:

PBS with 0.02% sodium azide and 50% glycerol pH 7.3.

Aliquoting is unnecessary for -20°C storage

\*\*\* 20ul sizes contain 0.1% BSA

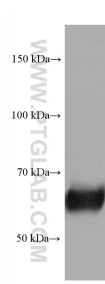
For technical support and original validation data for this product please contact:

T: 1 (888) 4PTGLAB (1-888-478-4522) (toll free in USA), or 1(312) 455-8498 (outside USA)

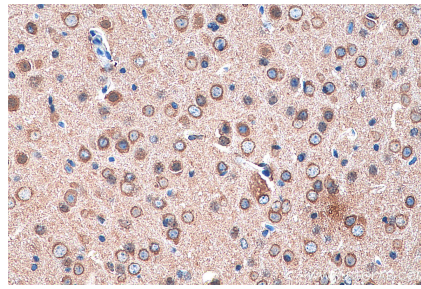
E: proteintech@ptglab.com  
W: ptglab.com

This product is exclusively available under Proteintech Group brand and is not available to purchase from any other manufacturer.

## Selected Validation Data



mouse cerebellum tissue were subjected to SDS PAGE followed by western blot with 68021-1-Ig (CRMP1 antibody) at dilution of 1:25000 incubated at room temperature for 1.5 hours.



Immunohistochemical analysis of paraffin-embedded mouse brain tissue slide using 68021-1-Ig (CRMP1 antibody) at dilution of 1:10000 (under 40x lens). Heat mediated antigen retrieval with Tris-EDTA buffer (pH 9.0).