

For Research Use Only

# ALDH1L1 Monoclonal antibody

Catalog Number: 68018-1-Ig



## Basic Information

<b>Catalog Number:</b> 68018-1-Ig	<b>GenBank Accession Number:</b> BC027241	<b>Purification Method:</b> Protein G purification
<b>Size:</b> 150ul , Concentration: 500 µg/ml by Nanodrop;	<b>GeneID (NCBI):</b> 10840	<b>CloneNo.:</b> 1C1A3
<b>Source:</b> Mouse	<b>Full Name:</b> aldehyde dehydrogenase 1 family, member L1	<b>Recommended Dilutions:</b> WB 1:5000-1:50000 IHC 1:16000-1:64000
<b>Isotype:</b> IgG1	<b>Calculated MW:</b> 99 kDa	
<b>Immunogen Catalog Number:</b> AG13190	<b>Observed MW:</b> 100 kDa	

## Applications

### Tested Applications:

IHC, WB, ELISA

### Species Specificity:

Human, rat, mouse, pig

**Note-IHC: suggested antigen retrieval with TE buffer pH 9.0; (\*) Alternatively, antigen retrieval may be performed with citrate buffer pH 6.0**

### Positive Controls:

WB : human colostrum, pig liver tissue, rat liver tissue, mouse liver tissue

IHC : mouse brain tissue,

## Background Information

Aldehyde dehydrogenase 1 family member L1 (ALDH1L1), belongs to the aldehyde dehydrogenase family of proteins and is responsible for formate oxidation in vivo. Loss of ALDH1L1 is associated with decreased apoptosis, increased cell motility, and cancer progression. ALDH1L1 catalyzes the conversion of 10-formyltetrahydrofolate, nicotinamide adenine dinucleotide phosphate (NADP<sup>+</sup>), and water to tetrahydrofolate, NADPH, and carbon dioxide. ALDH1L1 has some isoforms with MW of 99, 88 and 55 kDa.

## Storage

### Storage:

Store at -20°C.

### Storage Buffer:

PBS with 0.02% sodium azide and 50% glycerol pH 7.3.

Aliquoting is unnecessary for -20°C storage

\*\*\* 20ul sizes contain 0.1% BSA

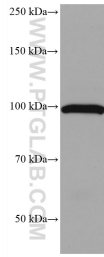
For technical support and original validation data for this product please contact:

T: 1 (888) 4PTGLAB (1-888-478-4522) (toll free in USA), or 1(312) 455-8498 (outside USA)

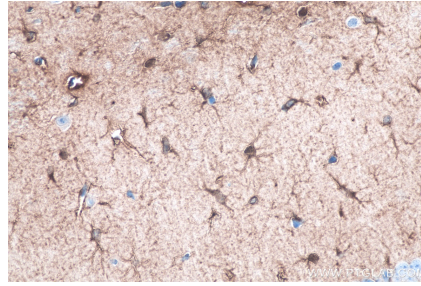
E: proteintech@ptglab.com  
W: ptglab.com

This product is exclusively available under Proteintech Group brand and is not available to purchase from any other manufacturer.

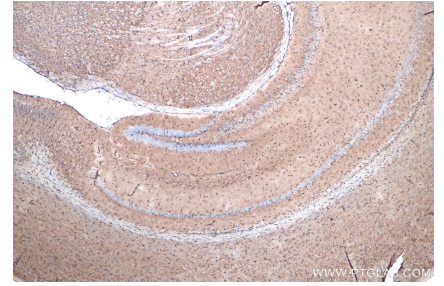
## Selected Validation Data



human colostrum were subjected to SDS PAGE followed by western blot with 68018-1-Ig (ALDH1L1 antibody) at dilution of 1:20000 incubated at room temperature for 1.5 hours.



Immunohistochemical analysis of paraffin-embedded mouse brain tissue slide using 68018-1-Ig (ALDH1L1 antibody) at dilution of 1:32000 (under 40x lens). Heat mediated antigen retrieval with Tris-EDTA buffer (pH 9.0).



Immunohistochemical analysis of paraffin-embedded mouse brain tissue slide using 68018-1-Ig (ALDH1L1 antibody) at dilution of 1:32000 (under 4x lens). Heat mediated antigen retrieval with Tris-EDTA buffer (pH 9.0).