

For Research Use Only

SPTBN1 Monoclonal antibody

Catalog Number: 67978-1-Ig **1 Publications**



Basic Information

Catalog Number: 67978-1-Ig	GenBank Accession Number: BC137282	Purification Method: Protein G purification
Size: 150ul, Concentration: 1000 µg/ml by Nanodrop;	GeneID (NCBI): 6711	CloneNo.: 1E1D1
Source: Mouse	Full Name: spectrin, beta, non-erythrocytic 1	Recommended Dilutions: WB 1:5000-1:50000 IHC 1:500-1:2000
Isotype: IgG1	Calculated MW: 2364 aa, 275 kDa	
Immunogen Catalog Number: AG31713	Observed MW: 250-275 kDa	

Applications

Tested Applications: IHC, WB, ELISA	Positive Controls: WB : HeLa cells, mouse cerebellum tissue, HepG2 cells, Jurkat cells, pig brain, rabbit brain, rat brain, mouse brain, rat cerebellum
Cited Applications: IHC	IHC : human liver cancer tissue,
Species Specificity: Human, mouse, rat, rabbit, pig	
Cited Species: human	
Note-IHC: suggested antigen retrieval with TE buffer pH 9.0; (*) Alternatively, antigen retrieval may be performed with citrate buffer pH 6.0	

Background Information

SPTBN1 is the non-erythrocytic form of β -spectrin or β -fodrin. Spectrins are members of the superfamily of F-actin cross linking proteins that are important as scaffolding proteins for protein sorting, cell adhesion, and migration. Reduced expression of SPTBN1 has been found to correlate with shorter survival of patients with hepatocellular cancer, pancreatic cancer and other malignancies of the gastrointestinal tract, suggesting tumor suppression ability of this protein.

Notable Publications

Author	Pubmed ID	Journal	Application
Wenting Tang	37013511	BMC Cancer	IHC

Storage

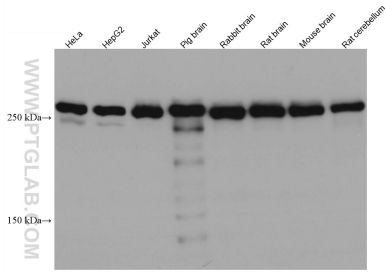
Storage:
Store at -20°C.
Storage Buffer:
PBS with 0.02% sodium azide and 50% glycerol pH 7.3.
Aliquoting is unnecessary for -20°C storage

*** 20ul sizes contain 0.1% BSA

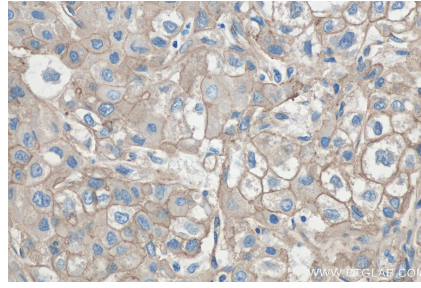
For technical support and original validation data for this product please contact:
T: 1 (888) 4PTGLAB (1-888-478-4522) (toll free in USA), or 1(312) 455-8498 (outside USA)
E: proteintech@ptglab.com
W: ptglab.com

This product is exclusively available under Proteintech Group brand and is not available to purchase from any other manufacturer.

Selected Validation Data



Various lysates were subjected to SDS PAGE followed by western blot with 67978-1-Ig (SPTBN1 antibody) at dilution of 1:10000 incubated at room temperature for 1.5 hours.



Immunohistochemical analysis of paraffin-embedded human liver cancer tissue slide using 67978-1-Ig (SPTBN1 antibody) at dilution of 1:1000 (under 10x lens). Heat mediated antigen retrieval with Tris-EDTA buffer (pH 9.0).