

For Research Use Only

# PSMA3 Monoclonal antibody

Catalog Number: 67938-1-Ig



## Basic Information

<b>Catalog Number:</b> 67938-1-Ig	<b>GenBank Accession Number:</b> BC029402	<b>Purification Method:</b> Protein A purification
<b>Size:</b> 150ul , Concentration: 1000 µg/ml by Nanodrop;	<b>GeneID (NCBI):</b> 5684	<b>CloneNo.:</b> 1A8C9
<b>Source:</b> Mouse	<b>Full Name:</b> proteasome (prosome, macropain) subunit, alpha type, 3	<b>Recommended Dilutions:</b> WB 1:5000-1:50000 IHC 1:250-1:1000
<b>Isotype:</b> IgG2b	<b>Calculated MW:</b> 255 aa, 28 kDa	
<b>Immunogen Catalog Number:</b> AG30552	<b>Observed MW:</b> 28 kDa	

## Applications

### Tested Applications:

IHC, WB, ELISA

### Species Specificity:

Human, mouse, rat

**Note-IHC: suggested antigen retrieval with TE buffer pH 9.0; (\*) Alternatively, antigen retrieval may be performed with citrate buffer pH 6.0**

### Positive Controls:

WB : A431 cells, U2OS cells, Hela cells, HEK-293 cells, Jurkat cells, K-562 cells, HSC-T6 cells, NIH/3T3 cells, 4T1 cells

IHC : human liver cancer tissue,

## Background Information

PSMA3(Proteasome subunit alpha type-3) is also named as HC8, PSC8 and belongs to the peptidase T1A family. The proteasome is a multicatalytic protease complex that catalyzes an energy-dependent, extralysosomal proteolytic pathway responsible for selective elimination of proteins with aberrant structures and naturally occurring short-lived proteins related to metabolic regulation and cell cycle progression. It has 2 isoforms produced by alternative splicing.

## Storage

### Storage:

Store at -20°C.

### Storage Buffer:

PBS with 0.02% sodium azide and 50% glycerol pH 7.3.

Aliquoting is unnecessary for -20°C storage

\*\*\* 20ul sizes contain 0.1% BSA

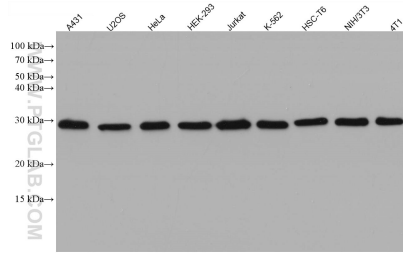
For technical support and original validation data for this product please contact:

T: 1 (888) 4PTGLAB (1-888-478-4522) (toll free in USA), or 1(312) 455-8498 (outside USA)

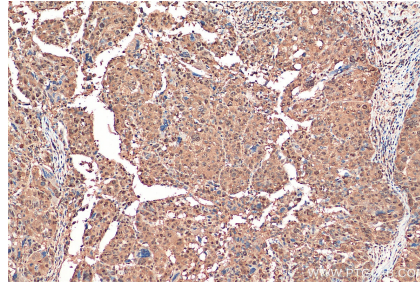
E: proteintech@ptglab.com  
W: ptglab.com

This product is exclusively available under Proteintech Group brand and is not available to purchase from any other manufacturer.

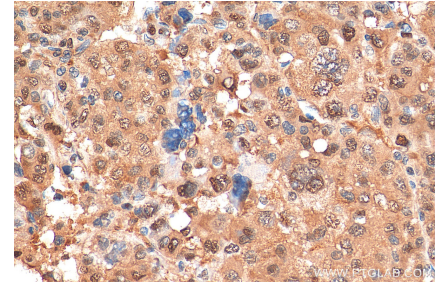
## Selected Validation Data



Various lysates were subjected to SDS PAGE followed by western blot with 67938-1-Ig (PSMA3 antibody) at dilution of 1:20000 incubated at room temperature for 1.5 hours.



Immunohistochemical analysis of paraffin-embedded human liver cancer tissue slide using 67938-1-Ig (PSMA3 antibody) at dilution of 1:500 (under 10x lens). Heat mediated antigen retrieval with Tris-EDTA buffer (pH 9.0).



Immunohistochemical analysis of paraffin-embedded human liver cancer tissue slide using 67938-1-Ig (PSMA3 antibody) at dilution of 1:500 (under 40x lens). Heat mediated antigen retrieval with Tris-EDTA buffer (pH 9.0).