

For Research Use Only

NUDT22 Monoclonal antibody

Catalog Number: 67921-1-Ig



Basic Information

Catalog Number: 67921-1-Ig	GenBank Accession Number: BC006129	Purification Method: Protein A purification
Size: 150ul , Concentration: 1000 µg/ml by Nanodrop;	GeneID (NCBI): 84304	CloneNo.: 3C3H9
Source: Mouse	Full Name: nudix (nucleoside diphosphate linked moiety X)-type motif 22	Recommended Dilutions:
Isotype: IgG2b	Calculated MW: 303 aa, 33 kDa	
Immunogen Catalog Number: AG14787	Observed MW: 33 kDa	

Applications

Tested Applications:
FC, WB, ELISA

Species Specificity:
Human, rat

Positive Controls:
WB : Jurkat cells, LNCaP cells, K-562 cells, HSC-T6 cells

Background Information

Human NUDT22 belongs to the diverse NUDIX family of proteins, is a Mg²⁺-dependent UDP-glucose and UDP-galactose hydrolase, producing UMP and glucose 1-phosphate or galactose 1-phosphate.

Storage

Storage:
Store at -20°C. Stable for one year after shipment.

Storage Buffer:
PBS with 0.02% sodium azide and 50% glycerol pH 7.3.

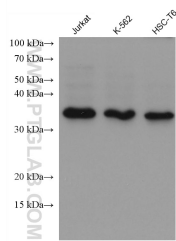
Aliquoting is unnecessary for -20°C storage

*** 20ul sizes contain 0.1% BSA

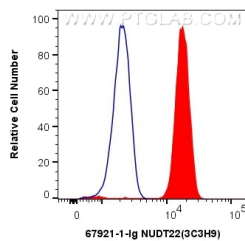
For technical support and original validation data for this product please contact:
T: 1 (888) 4PTGLAB (1-888-478-4522) (toll free in USA), or 1(312) 455-8498 (outside USA) E: proteintech@ptglab.com
W: ptglab.com

This product is exclusively available under Proteintech Group brand and is not available to purchase from any other manufacturer.

Selected Validation Data



Various lysates were subjected to SDS PAGE followed by western blot with 67921-1-Ig (NUDT22 antibody) at dilution of 1:4000 incubated at room temperature for 1.5 hours.



1X10⁶ Jurkat cells were intracellularly stained with 0.4 ug Anti-Human NUDT22 (67921-1-Ig, Clone:3C3H9) and CoraLite®488-Conjugated AffiniPure Goat Anti-Mouse IgG(H+L) at dilution 1:1000 (red), or 0.4 ug Mouse IgG2b Isotype Control (MPC-11) (65128-1-Ig, Clone: MPC-11) (blue). Cells were fixed and permeabilized with Transcription Factor Staining Buffer Kit (PF00011).