

For Research Use Only

PGD Monoclonal antibody

Catalog Number: 67916-1-Ig



Basic Information

Catalog Number: 67916-1-Ig	GenBank Accession Number: BC000368	Purification Method: Protein G purification
Size: 150ul , Concentration: 1000 µg/ml by Nanodrop;	GeneID (NCBI): 5226	CloneNo.: 2A10G4
Source: Mouse	Full Name: phosphogluconate dehydrogenase	Recommended Dilutions: WB 1:5000-1:50000 IF 1:400-1:1600
Isotype: IgG1	Calculated MW: 53 kDa	
Immunogen Catalog Number: AG6871	Observed MW: 53 kDa, 45 kDa	

Applications

Tested Applications: IF, WB, ELISA	Positive Controls:
Species Specificity: Human	WB : LNCaP cells, Jurkat cells, K-562 cells, HeLa cells, HEK-293 cells IF : HepG2 cells,

Background Information

PGD, also named as PGDH, belongs to the 6-phosphogluconate dehydrogenase family. PGD catalyses the oxidative decarboxylation of 6-phosphogluconate to ribulose 5-phosphate in the context of the oxidative part of the pentose phosphate pathway. PGD is important for the production of NADPH, which is necessary for reductive biosynthesis, such as the formation of lipids and nucleotides, and the activity of enzymes involved in maintaining cell integrity, in combatting oxidative stress and in the first line of immunological defence. (PMID: 35234135)

Storage

Storage:
Store at -20°C.
Storage Buffer:
PBS with 0.02% sodium azide and 50% glycerol pH 7.3.
Aliquoting is unnecessary for -20°C storage

***** 20ul sizes contain 0.1% BSA**

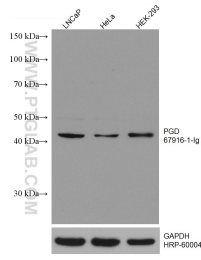
For technical support and original validation data for this product please contact:

T: 1 (888) 4PTGLAB (1-888-478-4522) (toll free in USA), or 1(312) 455-8498 (outside USA)

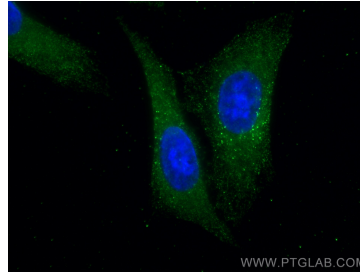
E: proteintech@ptglab.com
W: ptglab.com

This product is exclusively available under Proteintech Group brand and is not available to purchase from any other manufacturer.

Selected Validation Data



Various lysates were subjected to SDS PAGE followed by western blot with 67916-1-Ig (PGD antibody) at dilution of 1:25000 incubated at room temperature for 1.5 hours. The membrane was stripped and reblotted with HRP-conjugated GAPDH Monoclonal antibody (HRP-60004) as loading control.



Immunofluorescent analysis of (-20°C Methanol) fixed HepG2 cells using PGD antibody (67916-1-Ig, Clone: 2A10G4) at dilution of 1:800 and CoraLite® 488-Conjugated AffiniPure Goat Anti-Mouse IgG(H+L).