

For Research Use Only

Importin Alpha 5 Monoclonal antibody



Catalog Number: 67897-1-Ig

Featured Product

Basic Information

Catalog Number: 67897-1-Ig	GenBank Accession Number: BC002374	Purification Method: Protein A purification
Size: 150ul , Concentration: 1000 µg/ml by Nanodrop;	GeneID (NCBI): 3836	CloneNo.: 2A7G7
Source: Mouse	Full Name: karyopherin alpha 1 (importin alpha 5)	Recommended Dilutions: WB 1:5000-1:50000 IHC 1:500-1:2000 IF 1:200-1:800
Isotype: IgG2a	Calculated MW: 60 kDa	
Immunogen Catalog Number: AG12751	Observed MW: 60-62 kDa	

Applications

Tested Applications:

IF, IHC, WB, ELISA

Species Specificity:

Human, mouse, rat

Note-IHC: suggested antigen retrieval with TE buffer pH 9.0; (*) Alternatively, antigen retrieval may be performed with citrate buffer pH 6.0

Positive Controls:

WB : HCT 116 cells, HSC-T6 cells, 4T1 cells, HeLa cells, HepG2 cells, Jurkat cells, K-562 cells, PC-12 cells, NIH/3T3 cells

IHC : mouse testis tissue,

IF : MCF-7 cells,

Background Information

Importins (alpha and beta) are transport factors that transport proteins into the nucleus. alpha importins function by binding transcription factors at nuclear localization sequences (NLS), and associating with importin beta subunits to translocate through the nuclear pore. Six isoforms of alpha importins have been described in human. Importin alpha 5 is the predominant importin in adult CNS and is essential for differentiation and viability of neural cells.

Storage

Storage:

Store at -20°C. Stable for one year after shipment.

Storage Buffer:

PBS with 0.02% sodium azide and 50% glycerol pH 7.3.

Aliquoting is unnecessary for -20°C storage

*** 20ul sizes contain 0.1% BSA

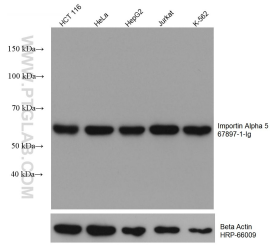
For technical support and original validation data for this product please contact:

T: 1 (888) 4PTGLAB (1-888-478-4522) (toll free in USA), or 1(312) 455-8498 (outside USA)

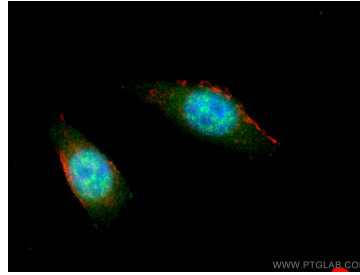
E: proteintech@ptglab.com
W: ptglab.com

This product is exclusively available under Proteintech Group brand and is not available to purchase from any other manufacturer.

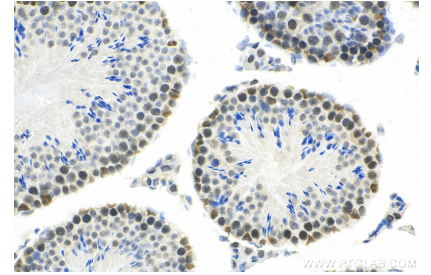
Selected Validation Data



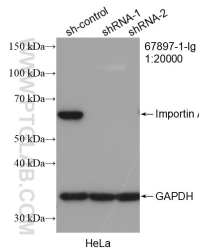
Various lysates were subjected to SDS PAGE followed by western blot with 67897-1-Ig (KPNA1 antibody) at dilution of 1:10000 incubated at room temperature for 1.5 hours. The membrane was stripped and reblotted with HRP-conjugated Beta Actin Monoclonal antibody (HRP-66009) as loading control.



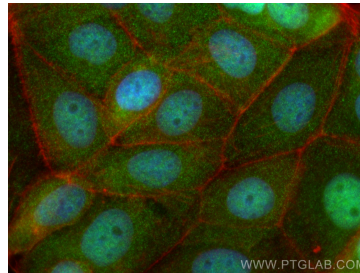
Immunofluorescent analysis of (4% PFA) fixed MCF-7 cells using Importin Alpha 5 antibody (67897-1-Ig, Clone: 2A7G7) at dilution of 1:400 and Coralite®488-Conjugated AffiniPure Goat Anti-Mouse IgG(H+L), CL594-Phalloidin (red).



Immunohistochemical analysis of paraffin-embedded mouse testis tissue slide using 67897-1-Ig (Importin Alpha 5 antibody) at dilution of 1:1000 (under 40x lens). Heat mediated antigen retrieval with Tris-EDTA buffer (pH 9.0).



WB result of Importin Alpha 5 antibody (67897-1-Ig; 1:20000; incubated at room temperature for 1.5 hours) with sh-Control and sh-Importin Alpha 5 transfected HeLa cells.



Immunofluorescent analysis of (4% PFA) fixed MCF-7 cells using Importin Alpha 5 antibody (67897-1-Ig, Clone: 2A7G7) at dilution of 1:800 and Coralite®488-Conjugated AffiniPure Goat Anti-Mouse IgG(H+L), CL594-Phalloidin (red).