

For Research Use Only

# RP2 Monoclonal antibody

Catalog Number: 67795-1-Ig



## Basic Information

<b>Catalog Number:</b> 67795-1-Ig	<b>GenBank Accession Number:</b> BC043348	<b>Purification Method:</b> Protein G purification
<b>Size:</b> 150ul , Concentration: 1000 µg/ml by Nanodrop;	<b>GeneID (NCBI):</b> 6102	<b>CloneNo.:</b> 1G2A9
<b>Source:</b> Mouse	<b>Full Name:</b> retinitis pigmentosa 2 (X-linked recessive)	<b>Recommended Dilutions:</b> WB 1:1000-1:4000
<b>Isotype:</b> IgG1	<b>Calculated MW:</b> 350 aa, 40 kDa	
<b>Immunogen Catalog Number:</b> AG5630	<b>Observed MW:</b> 37-40 kDa	

## Applications

**Tested Applications:**  
WB, ELISA

**Species Specificity:**  
Human, rabbit

**Positive Controls:**

**WB :** HepG2 cells, HeLa cells, Y79 cells, Jurkat cells,  
human platelets tissue, human placenta tissue, rabbit  
retina tissue

## Background Information

### Storage

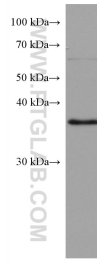
**Storage:**  
Store at -20°C.  
**Storage Buffer:**  
PBS with 0.02% sodium azide and 50% glycerol pH 7.3.  
Aliquoting is unnecessary for -20°C storage

**\*\*\* 20ul sizes contain 0.1% BSA**

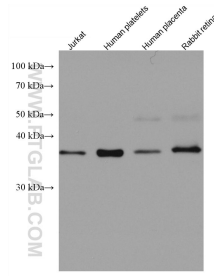
For technical support and original validation data for this product please contact:  
T: 1 (888) 4PTGLAB (1-888-478-4522) (toll free in USA), or 1(312) 455-8498 (outside USA)  
E: [proteintech@ptglab.com](mailto:proteintech@ptglab.com)  
W: [ptglab.com](http://ptglab.com)

**This product is exclusively available under Proteintech Group brand and is not available to purchase from any other manufacturer.**

## Selected Validation Data



HepG2 cells were subjected to SDS PAGE followed by western blot with 67795-1-Ig (RP2 antibody) at dilution of 1:2000 incubated at room temperature for 1.5 hours.



Various lysates were subjected to SDS PAGE followed by western blot with 67795-1-Ig (RP2 antibody) at dilution of 1:2000 incubated at room temperature for 1.5 hours.