

For Research Use Only

# SAR1B Monoclonal antibody

Catalog Number: 67765-1-Ig



## Basic Information

<b>Catalog Number:</b> 67765-1-Ig	<b>GenBank Accession Number:</b> BC002847	<b>Purification Method:</b> Protein G purification
<b>Size:</b> 150ul , Concentration: 1000 µg/ml by Nanodrop;	<b>GeneID (NCBI):</b> 51128	<b>CloneNo.:</b> 1B11A1
<b>Source:</b> Mouse	<b>Full Name:</b> SAR1 homolog B (S. cerevisiae)	<b>Recommended Dilutions:</b> WB 1:5000-1:10000
<b>Isotype:</b> IgG1	<b>Calculated MW:</b> 22 kDa	
<b>Immunogen Catalog Number:</b> AG7718	<b>Observed MW:</b> 22-25 kDa	

## Applications

<b>Tested Applications:</b> WB, ELISA	<b>Positive Controls:</b> WB : pig liver tissue, HeLa cells, HepG2 cells, L02 cells, mouse liver tissue, rat liver tissue, rabbit liver tissue
<b>Species Specificity:</b> Human, mouse, rat, pig, rabbit	

## Background Information

SAR1B, also named as SARA2, SARB and GTBPB, belongs to the small GTPase superfamily and SAR1 family. It is involved in transport from the endoplasmic reticulum to the Golgi apparatus. SAR1B is activated by the guanine nucleotide exchange factor PREB. It is involved in the selection of the protein cargo and the assembly of the COPII coat complex.

## Storage

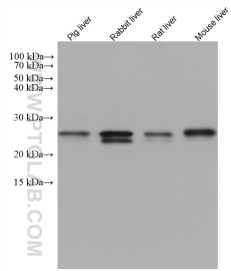
**Storage:**  
Store at -20°C.  
**Storage Buffer:**  
PBS with 0.02% sodium azide and 50% glycerol pH 7.3.  
Aliquoting is unnecessary for -20°C storage

**\*\*\* 20ul sizes contain 0.1% BSA**

For technical support and original validation data for this product please contact:  
T: 1 (888) 4PTGLAB (1-888-478-4522) (toll free in USA), or 1(312) 455-8498 (outside USA) E: proteintech@ptglab.com W: ptglab.com

This product is exclusively available under Proteintech Group brand and is not available to purchase from any other manufacturer.

## Selected Validation Data



Various lysates were subjected to SDS PAGE followed by western blot with 67765-1-Ig (SAR1B antibody) at dilution of 1:10000 incubated at room temperature for 1.5 hours.