

For Research Use Only

# PPT1 Monoclonal antibody

Catalog Number: 67699-1-Ig **Featured Product**



## Basic Information

<b>Catalog Number:</b> 67699-1-Ig	<b>GenBank Accession Number:</b> BC008426	<b>Purification Method:</b> Protein A purification
<b>Size:</b> 150ul , Concentration: 1000 µg/ml by Nanodrop and 500 µg/ml by Bradford method using BSA as the standard;	<b>GeneID (NCBI):</b> 5538	<b>CloneNo.:</b> 1A1A3
<b>Source:</b> Mouse	<b>Full Name:</b> palmitoyl-protein thioesterase 1	<b>Recommended Dilutions:</b> WB 1:2000-1:10000
<b>Isotype:</b> IgG2a	<b>Calculated MW:</b> 34 kDa	
<b>Immunogen Catalog Number:</b> AG30550	<b>Observed MW:</b> 32-34 kda	

## Applications

### Tested Applications:

WB, ELISA

### Species Specificity:

Human, Pig, Rabbit

### Positive Controls:

WB : A549 cells, pig heart tissue, pig brain tissue, LNCap cells, HeLa cells, Jurkat cells, K-562 cells, pig cerebellum tissue, rabbit brain tissue, rabbit cerebellum tissue

## Background Information

The defective gene behind the INCL (infantile neuronal ceroid lipofuscinoses) disease, CLN1, encodes for palmitoyl protein thioesterase 1 (PPT1). It consists of 306 amino acids, including a signal sequence of 26 amino acids and three N-linked glycosylation sites. This protein exists with a molecular mass of 32 kDa, 34 kDa, 36 kDa, and 38 kDa. The enzyme is transported into lysosomes of non-neuronal cells by the mannose 6-phosphate receptor (M6PR) mediated pathway and a significant amount of native PPT1 resides in a complex rather than in a monomeric form (PMID:17565660).

## Storage

### Storage:

Store at -20°C. Stable for one year after shipment.

### Storage Buffer:

PBS with 0.02% sodium azide and 50% glycerol pH 7.3.

Aliquoting is unnecessary for -20°C storage

\*\*\* 20ul sizes contain 0.1% BSA

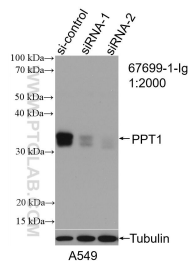
For technical support and original validation data for this product please contact:

T: 1 (888) 4PTGLAB (1-888-478-4522) (toll free in USA), or 1(312) 455-8498 (outside USA)

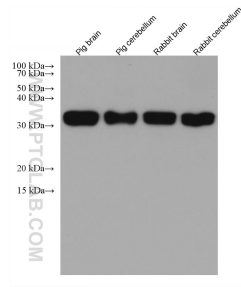
E: proteintech@ptglab.com  
W: ptglab.com

This product is exclusively available under Proteintech Group brand and is not available to purchase from any other manufacturer.

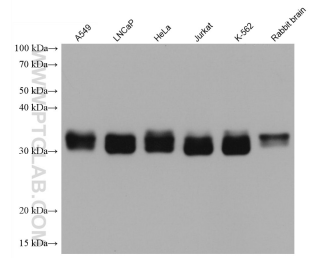
## Selected Validation Data



WB result of PPT1 antibody (67699-1-Ig: 1:2000; incubated at room temperature for 1.5 hours) with sh-Control and sh-PPT1 transfected A549 cells.



Various lysates were subjected to SDS PAGE followed by western blot with 67699-1-Ig (PPT1 antibody) at dilution of 1:5000 incubated at room temperature for 1.5 hours.



Various lysates were subjected to SDS PAGE followed by western blot with 67699-1-Ig (PPT1 antibody) at dilution of 1:5000 incubated at room temperature for 1.5 hours.