

For Research Use Only

Dextrin Monoclonal antibody

Catalog Number: 67657-1-Ig **1 Publications**



Basic Information

Catalog Number: 67657-1-Ig	GenBank Accession Number: BC009477	Purification Method: Protein A purification
Size: 150ul , Concentration: 1000 µg/ml by Nanodrop and 525 µg/ml by Bradford method using BSA as the standard;	GeneID (NCBI): 11034	CloneNo.: 1A12D9
Source: Mouse	Full Name: dextrin (actin depolymerizing factor)	Recommended Dilutions: WB 1:3000-1:20000
Isotype: IgG1	Calculated MW: 19 kDa	
Immunogen Catalog Number: AG1402	Observed MW: 18-19 kDa	

Applications

Tested Applications: WB, ELISA	Positive Controls: WB : A549 cells, HeLa cells, human platelet, pig rectum, rat rectum, pig brain, rat brain, mouse brain
Cited Applications: WB	
Species Specificity: Human, mouse, rat, pig	
Cited Species: human	

Background Information

Dextrin (also known as actin depolymerization factor, ADF) is an actin-binding protein contributing to cytoskeletal dynamics by promoting rapid actin filament disassembly. By regulating actin cytoskeletal reorganization it plays an important role in the formation of filopodia, which further promotes tumor cell invasion and metastasis. Dextrin has been reported to be overexpressed in primary colon cancer.

Notable Publications

Author	Pubmed ID	Journal	Application
Xiaoguang Liu	36747082	Nat Cell Biol	WB

Storage

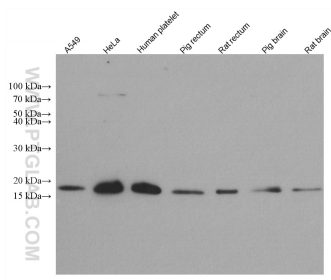
Storage:
Store at -20°C.
Storage Buffer:
PBS with 0.02% sodium azide and 50% glycerol pH 7.3.
Aliquoting is unnecessary for -20°C storage

*** 20ul sizes contain 0.1% BSA

For technical support and original validation data for this product please contact:
T: 1 (888) 4PTGLAB (1-888-478-4522) (toll free in USA), or 1(312) 455-8498 (outside USA)
E: proteintech@ptglab.com
W: ptglab.com

This product is exclusively available under Proteintech Group brand and is not available to purchase from any other manufacturer.

Selected Validation Data



Various lysates were subjected to SDS PAGE followed by western blot with 67657-1-Ig (Dextrin antibody) at dilution of 1:10000 incubated at room temperature for 1.5 hours.