

For Research Use Only

SORD Monoclonal antibody

Catalog Number: 67625-1-Ig **2 Publications**



Basic Information

Catalog Number: 67625-1-Ig	GenBank Accession Number: BC021085	Purification Method: Protein A purification
Size: 150ul , Concentration: 1700 µg/ml by Nanodrop and 1000 µg/ml by Bradford method using BSA as the standard;	GeneID (NCBI): 6652	CloneNo.: 4A8E1
Source: Mouse	Full Name: sorbitol dehydrogenase	Recommended Dilutions: WB 1:5000-1:50000
Isotype: IgG2b	Calculated MW: 357 aa, 38 kDa	
Immunogen Catalog Number: AG8651	Observed MW: 38 kDa	

Applications

Tested Applications: WB, ELISA	Positive Controls: WB : LNCaP cells, HSC-T6 cells, PC-12 cells, NIH/3T3 cells, HeLa cells, HepG2 cells, Jurkat cells, K-562 cells
Cited Applications: WB	
Species Specificity: Human	
Cited Species: human, mouse	

Background Information

SORD(Sorbitol dehydrogenase) is also named as L-iditol 2-dehydrogenase and belongs to the zinc-containing alcohol dehydrogenase family. It catalyzes the interconversion of polyols and their corresponding ketoses, and together with aldose reductase, makes up the sorbitol pathway that is believed to play an important role in the development of diabetic complications. This protein can form a homotetramer(PMID:12962626). Measurement of SORD is a specific indicator of liver cell damage and parenchymal.

Notable Publications

Author	Pubmed ID	Journal	Application
Semira R. Ortiz	36276829	Front Nutr	WB
Semira R Ortiz	37245661	J Nutr	WB

Storage

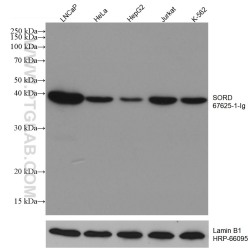
Storage:
Store at -20°C. Stable for one year after shipment.
Storage Buffer:
PBS with 0.02% sodium azide and 50% glycerol pH 7.3.
Aliquoting is unnecessary for -20°C storage

*** 20ul sizes contain 0.1% BSA

For technical support and original validation data for this product please contact:
T: 1 (888) 4PTGLAB (1-888-478-4522) (toll free in USA), or 1(312) 455-8498 (outside USA) E: proteintech@ptglab.com W: ptglab.com

This product is exclusively available under Proteintech Group brand and is not available to purchase from any other manufacturer.

Selected Validation Data



Various lysates were subjected to SDS PAGE followed by western blot with 67625-1-Ig (SORD antibody) at dilution of 1:20000 incubated at room temperature for 1.5 hours. The membrane was stripped and reblotted with HRP-conjugated Lamin B1 Monoclonal antibody (HRP-66095) as loading control.