

For Research Use Only

SIX6 Monoclonal antibody

Catalog Number: 67622-1-Ig



Basic Information

Catalog Number: 67622-1-Ig	GenBank Accession Number: BC069413	Purification Method: Protein A purification
Size: 150ul , Concentration: 867 µg/ml by Bradford method using BSA as the standard;	GeneID (NCBI): 4990	CloneNo.: 1C12E2
Source: Mouse	Full Name: SIX homeobox 6	Recommended Dilutions: WB 1:1000-1:4000
Isotype: IgG1	Calculated MW: 246 aa, 28 kDa	
Immunogen Catalog Number: AG15496	Observed MW: 30-35 kDa	

Applications

Tested Applications: WB, ELISA	Positive Controls: WB : HUVEC cells, NCCIT cells
Species Specificity: Human	

Background Information

SIX6, also named as OPTX2 or SIX9, is a 246 amino acid protein, which is expressed in the developing and adult retina. Defects in this gene are a cause of isolated microphthalmia with cataract type 2 (MCOPT2).

Storage

Storage:
Store at -20°C. Stable for one year after shipment.
Storage Buffer:
PBS with 0.02% sodium azide and 50% glycerol pH 7.3.
Aliquoting is unnecessary for -20°C storage

*** 20ul sizes contain 0.1% BSA

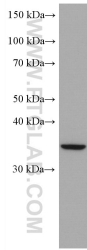
For technical support and original validation data for this product please contact:

T: 1 (888) 4PTGLAB (1-888-478-4522) (toll free in USA), or 1(312) 455-8498 (outside USA)

E: proteintech@ptglab.com
W: ptglab.com

This product is exclusively available under Proteintech Group brand and is not available to purchase from any other manufacturer.

Selected Validation Data



HUVEC cells were subjected to SDS PAGE followed by western blot with 67622-1-Ig (SiX6 antibody) at dilution of 1:2000 incubated at room temperature for 1.5 hours.