

For Research Use Only

# EIF1 Monoclonal antibody

Catalog Number: 67601-1-Ig



## Basic Information

<b>Catalog Number:</b> 67601-1-Ig	<b>GenBank Accession Number:</b> BC005118	<b>Purification Method:</b> Protein A purification
<b>Size:</b> 150ul , Concentration: 2100 µg/ml by Nanodrop and 1000 µg/ml by Bradford method using BSA as the standard;	<b>GeneID (NCBI):</b> 10209	<b>CloneNo.:</b> 2G8C6
<b>Source:</b> Mouse	<b>Full Name:</b> eukaryotic translation initiation factor 1	<b>Recommended Dilutions:</b> WB 1:1000-1:6400 IF 1:150-1:600
<b>Isotype:</b> IgG2b	<b>Calculated MW:</b> 13 kDa	
<b>Immunogen Catalog Number:</b> AG7843	<b>Observed MW:</b> 13 kDa	

## Applications

<b>Tested Applications:</b> IF, WB, ELISA	<b>Positive Controls:</b> WB : HEK-293 cells, Jurkat cells
<b>Species Specificity:</b> Human	<b>IF :</b> HepG2 cells,

## Background Information

It is a necessary for scanning and involved in initiation site selection. Promotes the assembly of 48S ribosomal complexes at the authentic initiation codon of a conventional capped mRNA. Molecular weight is 13kd.

## Storage

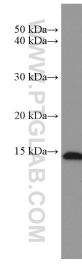
**Storage:**  
Store at -20°C.  
**Storage Buffer:**  
PBS with 0.02% sodium azide and 50% glycerol pH 7.3.  
Aliquoting is unnecessary for -20°C storage

**\*\*\* 20ul sizes contain 0.1% BSA**

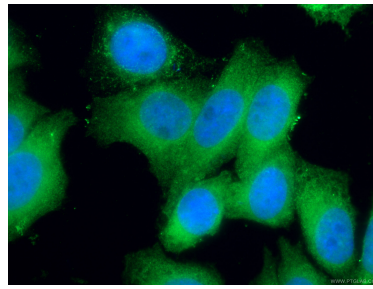
For technical support and original validation data for this product please contact:  
T: 1 (888) 4PTGLAB (1-888-478-4522) (toll free in USA), or 1(312) 455-8498 (outside USA)  
E: proteintech@ptglab.com  
W: ptglab.com

**This product is exclusively available under Proteintech Group brand and is not available to purchase from any other manufacturer.**

## Selected Validation Data



HEK-293 cells were subjected to SDS PAGE followed by western blot with 67601-1-Ig (EIF1 antibody) at dilution of 1:3200 incubated at room temperature for 1.5 hours.



Immunofluorescent analysis of (4% PFA) fixed HepG2 cells using 67601-1-Ig (EIF1 antibody), at dilution of 1:300 and CoraLite®488-Conjugated AffiniPure Goat Anti-Mouse IgG(H+L).