

For Research Use Only

# TERF1 Monoclonal antibody

Catalog Number: 67592-1-Ig



## Basic Information

<b>Catalog Number:</b> 67592-1-Ig	<b>GenBank Accession Number:</b> BC029378	<b>Purification Method:</b> Protein G purification
<b>Size:</b> 150ul , Concentration: 1700 µg/ml by Nanodrop and 1000 µg/ml by Bradford method using BSA as the standard;	<b>GeneID (NCBI):</b> 7013	<b>CloneNo.:</b> 1D10G4
<b>Source:</b> Mouse	<b>Full Name:</b> telomeric repeat binding factor (NIMA-interacting) 1	<b>Recommended Dilutions:</b> WB 1:1000-1:6000
<b>Isotype:</b> IgG1	<b>Calculated MW:</b> 439 aa, 50 kDa	
<b>Immunogen Catalog Number:</b> AG12540	<b>Observed MW:</b> 48-50 kDa	

## Applications

<b>Tested Applications:</b> WB,ELISA	<b>Positive Controls:</b> WB : K-562 cells, HEK-293 cells, Jurkat cells
<b>Species Specificity:</b> Human, mouse, rat	

## Background Information

Telomeres are nucleoprotein complexes located at chromosome ends that consist of tandem arrays of TTAGGG repeats bound to specific proteins. Telomeres protect chromosome ends from degradation and end-to-end fusions, prevent activation of DNA damage checkpoints, and modulate the maintenance of telomeric DNA by telomerase. TERF1 (telomeric repeat-binding factor 1) binds the telomeric double-stranded TTAGGG repeat and negatively regulates telomere length. It's one component of the shelterin complex, which involved in the regulation of telomere length and protection.

## Storage

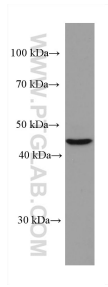
**Storage:**  
Store at -20°C.  
**Storage Buffer:**  
PBS with 0.1% sodium azide and 50% glycerol pH 7.3.  
Aliquoting is unnecessary for -20°C storage

\*\*\* 20ul sizes contain 0.1% BSA

For technical support and original validation data for this product please contact:  
T: 1 (888) 4PTGLAB (1-888-478-4522) (toll free in USA), or 1(312) 455-8498 (outside USA)  
E: proteintech@ptglab.com  
W: ptglab.com

This product is exclusively available under Proteintech Group brand and is not available to purchase from any other manufacturer.

## Selected Validation Data



K-562 cells were subjected to SDS PAGE followed by western blot with 67592-1-Ig (TERF1 antibody) at dilution of 1:3000 incubated at room temperature for 1.5 hours.