

For Research Use Only

Calumenin Monoclonal antibody

Catalog Number: 67585-1-Ig



Basic Information

Catalog Number: 67585-1-Ig	GenBank Accession Number: BC013383	Purification Method: Protein A purification
Size: 150ul , Concentration: 5914 µg/ml by Nanodrop and 1000 µg/ml by Bradford method using BSA as the standard;	GeneID (NCBI): 813	CloneNo.: 2D8B8
Source: Mouse	Full Name: calumenin	Recommended Dilutions: WB 1:1000-1:4000 IHC 1:250-1:1000 IF 1:50-1:500
Isotype: IgG1	Calculated MW: 315 aa, 37 kDa	
Immunogen Catalog Number: AG12073	Observed MW: 47-50 kDa	

Applications

Tested Applications:

IF, IHC, WB, ELISA

Species Specificity:

Human, mouse, rat

Note-IHC: suggested antigen retrieval with TE buffer pH 9.0; (*) Alternatively, antigen retrieval may be performed with citrate buffer pH 6.0

Positive Controls:

WB : HeLa cells, NIH/3T3 cells, HepG2 cells, HSC-T6 cells, Jurkat cells, RAW264.7 cells, HEK-293 cells

IHC : human colon cancer tissue, human cervical cancer tissue, human kidney tissue, mouse placenta tissue

IF : HeLa cells,

Background Information

Storage

Storage:

Store at -20°C. Stable for one year after shipment.

Storage Buffer:

PBS with 0.02% sodium azide and 50% glycerol pH 7.3.

Aliquoting is unnecessary for -20°C storage

*** 20ul sizes contain 0.1% BSA

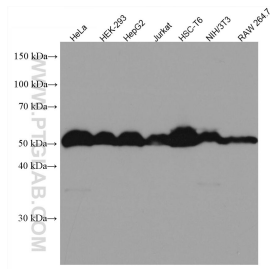
For technical support and original validation data for this product please contact:

T: 1 (888) 4PTGLAB (1-888-478-4522) (toll free in USA), or 1(312) 455-8498 (outside USA)

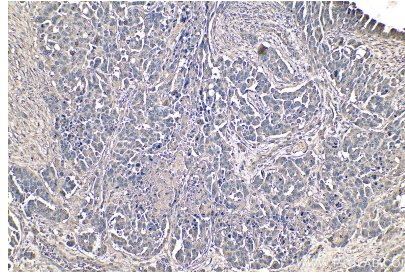
E: proteintech@ptglab.com
W: ptglab.com

This product is exclusively available under Proteintech Group brand and is not available to purchase from any other manufacturer.

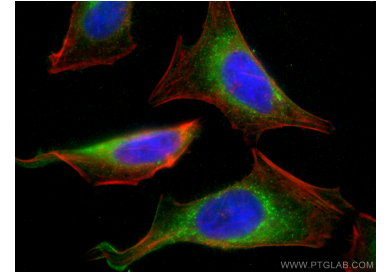
Selected Validation Data



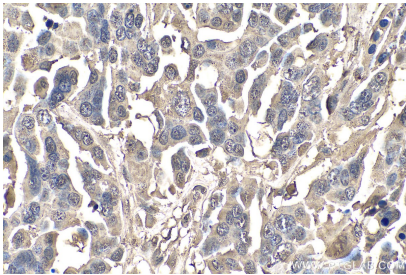
Various lysates were subjected to SDS PAGE followed by western blot with 67585-1-Ig (CALU antibody) at dilution of 1:2000 incubated at room temperature for 1.5 hours.



Immunohistochemical analysis of paraffin-embedded human colon cancer tissue slide using 67585-1-Ig (Calumenin antibody) at dilution of 1:500 (under 10x lens). Heat mediated antigen retrieval with Tris-EDTA buffer (pH 9.0).



Immunofluorescent analysis of (4% PFA) fixed HeLa cells using Calumenin antibody (67585-1-Ig, Clone: 2D8B8) at dilution of 1:200 and Coralite@488-Conjugated AffiniPure Goat Anti-Mouse IgG(H+L), CL594-Phalloidin (red).



Immunohistochemical analysis of paraffin-embedded human colon cancer tissue slide using 67585-1-Ig (Calumenin antibody) at dilution of 1:500 (under 40x lens). Heat mediated antigen retrieval with Tris-EDTA buffer (pH 9.0).