

For Research Use Only

# PTP4A1 Monoclonal antibody

Catalog Number: 67584-1-Ig



## Basic Information

<b>Catalog Number:</b> 67584-1-Ig	<b>GenBank Accession Number:</b> BC023975	<b>Purification Method:</b> Protein A purification
<b>Size:</b> 150ul , Concentration: 1000 µg/ml by Nanodrop and 471 µg/ml by Bradford method using BSA as the standard;	<b>GeneID (NCBI):</b> 7803	<b>CloneNo.:</b> 2C9E10
<b>Source:</b> Mouse	<b>Full Name:</b> protein tyrosine phosphatase type IVA, member 1	<b>Recommended Dilutions:</b> WB 1:2000-1:10000 IHC 1:250-1:1000
<b>Isotype:</b> IgG1	<b>Calculated MW:</b> 20 kDa	
<b>Immunogen Catalog Number:</b> AG14436	<b>Observed MW:</b> 18-20 kDa	

## Applications

### Tested Applications:

IHC, WB, ELISA

### Species Specificity:

Human, mouse, rat

**Note-IHC: suggested antigen retrieval with TE buffer pH 9.0; (\*) Alternatively, antigen retrieval may be performed with citrate buffer pH 6.0**

### Positive Controls:

WB : LNCaP cells, Jurkat cells, HeLa cells, HepG2 cells, HEK-293 cells, HSC-T6 cells, NIH/3T3 cells

IHC : human lung cancer tissue,

## Background Information

PTP4A1 (protein tyrosine phosphatase type IVA, member 1), also named as PRL1, HH72, PRL-1, PTP(CAAX1), PTPCAAX1, DKFZp779M0721, belongs to the protein-tyrosine phosphatase family, which play an important role in maintaining appropriate tyrosine phosphorylation levels in the cell during development and tissue regeneration (PMID:19341304). PTP4A1 is a PTPase and that it is highly expressed in growing hepatic cells and some tumor cell lines and is located primarily in the cell nucleus, and its overexpression modulates the growth of cells (PMID:8196618). PTP4A1 can exist as dimer, trimer and higher oligomers in vivo (PMID: 15571731, 18224294).

## Storage

### Storage:

Store at -20°C. Stable for one year after shipment.

### Storage Buffer:

PBS with 0.1% sodium azide and 50% glycerol pH 7.3.

Aliquoting is unnecessary for -20°C storage

\*\*\* 20ul sizes contain 0.1% BSA

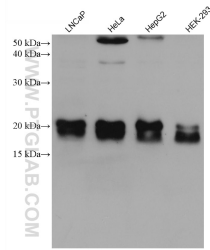
For technical support and original validation data for this product please contact:

T: 1 (888) 4PTGLAB (1-888-478-4522) (toll free in USA), or 1(312) 455-8498 (outside USA)

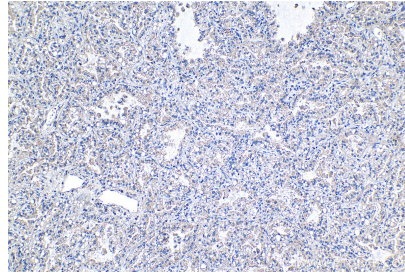
E: proteintech@ptglab.com  
W: ptglab.com

This product is exclusively available under Proteintech Group brand and is not available to purchase from any other manufacturer.

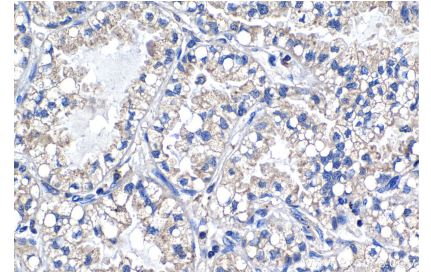
## Selected Validation Data



Various lysates were subjected to SDS PAGE followed by western blot with 67584-1-Ig (PTP4A1 antibody) at dilution of 1:5000 incubated at room temperature for 1.5 hours.



Immunohistochemical analysis of paraffin-embedded human lung cancer tissue slide using 67584-1-Ig (PTP4A1 antibody) at dilution of 1:500 (under 10x lens). Heat mediated antigen retrieval with Tris-EDTA buffer (pH 9.0).



Immunohistochemical analysis of paraffin-embedded human lung cancer tissue slide using 67584-1-Ig (PTP4A1 antibody) at dilution of 1:500 (under 40x lens). Heat mediated antigen retrieval with Tris-EDTA buffer (pH 9.0).