

For Research Use Only

# IPO4 Monoclonal antibody

Catalog Number: 67549-1-Ig



## Basic Information

<b>Catalog Number:</b> 67549-1-Ig	<b>GenBank Accession Number:</b> BC003690	<b>Purification Method:</b> Protein A purification
<b>Size:</b> 150ul , Concentration: 933 µg/ml by Bradford method using BSA as the standard;	<b>GeneID (NCBI):</b> 79711	<b>CloneNo.:</b> 2F3H2
<b>Source:</b> Mouse	<b>Full Name:</b> importin 4	<b>Recommended Dilutions:</b> WB 1:5000-1:50000 IHC 1:250-1:1000 IF 1:200-1:800
<b>Isotype:</b> IgG1	<b>Calculated MW:</b> 1081 aa, 118 kDa	
<b>Immunogen Catalog Number:</b> AG2281	<b>Observed MW:</b> 120 kDa	

## Applications

<b>Tested Applications:</b> IF, IHC, WB, ELISA	<b>Positive Controls:</b>
<b>Species Specificity:</b> Human	<b>WB:</b> A549 cells, LNCaP cells, HeLa cells, HEK-293 cells, Jurkat cells, K-562 cells, HL-60 cells, THP-1 cells
<b>Note-IHC:</b> <i>suggested antigen retrieval with TE buffer pH 9.0; (*) Alternatively, antigen retrieval may be performed with citrate buffer pH 6.0</i>	<b>IHC:</b> human stomach cancer tissue,
	<b>IF:</b> MCF-7 cells,

## Background Information

Importin-4 (IPO4) belongs to the importin  $\beta$  family which directs the cargo to pass through the nuclear pore complex via transient interaction with nucleoporins. IPO4 is responsible for transporting histones H3 and H4 into the nucleus for chromatin assembly. Recently IPO4 has been reported to contribute to gastric cancer progression and poor prognosis.

## Storage

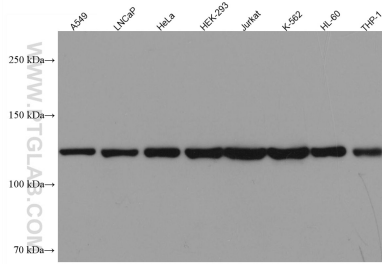
**Storage:**  
Store at -20°C. Stable for one year after shipment.  
**Storage Buffer:**  
PBS with 0.02% sodium azide and 50% glycerol pH 7.3.  
Aliquoting is unnecessary for -20°C storage

\*\*\* 20ul sizes contain 0.1% BSA

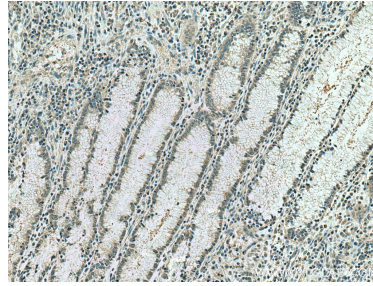
For technical support and original validation data for this product please contact:  
T: 1 (888) 4PTGLAB (1-888-478-4522) (toll free in USA), or 1(312) 455-8498 (outside USA)  
E: proteintech@ptglab.com  
W: ptglab.com

This product is exclusively available under Proteintech Group brand and is not available to purchase from any other manufacturer.

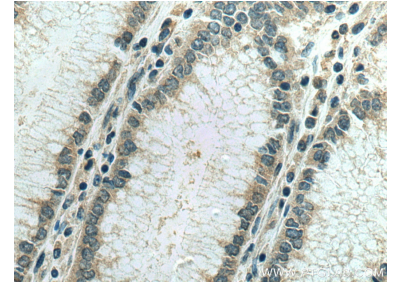
## Selected Validation Data



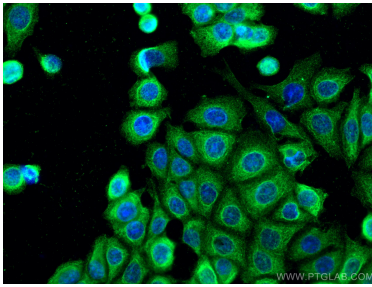
Various lysates were subjected to SDS PAGE followed by western blot with 67549-1-Ig (IPO4 antibody) at dilution of 1:10000 incubated at room temperature for 1.5 hours.



Immunohistochemical analysis of paraffin-embedded human stomach cancer tissue slide using 67549-1-Ig (IPO4 antibody) at dilution of 1:500 (under 10x lens). Heat mediated antigen retrieval with Tris-EDTA buffer (pH 9.0).



Immunohistochemical analysis of paraffin-embedded human stomach cancer tissue slide using 67549-1-Ig (IPO4 antibody) at dilution of 1:500 (under 40x lens). Heat mediated antigen retrieval with Tris-EDTA buffer (pH 9.0).



Immunofluorescent analysis of (-20°C Methanol) fixed MCF-7 cells using IPO4 antibody (67549-1-Ig, Clone: 2F3H2) at dilution of 1:400 and CoraLite®488-Conjugated AffiniPure Goat Anti-Mouse IgG(H+L).