

For Research Use Only

ERAP2 Monoclonal antibody

Catalog Number: 67477-1-Ig **1 Publications**



Basic Information

Catalog Number: 67477-1-Ig	GenBank Accession Number: BC065240	Purification Method: Protein A purification
Size: 150ul , Concentration: 1900 µg/ml by Nanodrop and 1000 µg/ml by Bradford method using BSA as the standard;	GeneID (NCBI): 64167	CloneNo.: 2B11A2
Source: Mouse	Full Name: endoplasmic reticulum aminopeptidase 2	Recommended Dilutions: WB 1:1000-1:5000
Isotype: IgG2b	Calculated MW: 110 kDa	
Immunogen Catalog Number: AG30061	Observed MW: 110-120 kDa	

Applications

Tested Applications: WB,ELISA	Positive Controls: WB : A549 cells, HeLa cells, HepG2 cells, HSC-T6 cells
Cited Applications: WB	
Species Specificity: Human, Rat	
Cited Species: human	

Background Information

ERAP2(Endoplasmic reticulum aminopeptidase 2) is also named as LRAP(Leukocyte-derived arginine aminopeptidase). It plays a central role in peptide trimming, a step required for the generation of most HLA class I-binding peptides. ERAP2 can form heterodimers with ERAP1(PMID:15908954). Defects in the expression of ERAP2 may cause improper antigen processing, possibly leading to favor tumor escape from the immune surveillance. ERAP2 has the calculated molecular mass of 105-110 kDa, and apparent molecular mass of 120 kDa due to the glycosylation.

Notable Publications

Author	Pubmed ID	Journal	Application
Pian Yu	36214762	Aging (Albany NY)	WB

Storage

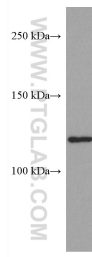
Storage:
Store at -20°C.
Storage Buffer:
PBS with 0.02% sodium azide and 50% glycerol pH 7.3.
Aliquoting is unnecessary for -20°C storage

*** 20ul sizes contain 0.1% BSA

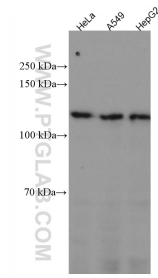
For technical support and original validation data for this product please contact:
T: 1 (888) 4PTGLAB (1-888-478-4522) (toll free in USA), or 1(312) 455-8498 (outside USA) E: proteintech@ptglab.com W: ptglab.com

This product is exclusively available under Proteintech Group brand and is not available to purchase from any other manufacturer.

Selected Validation Data



A549 cells were subjected to SDS PAGE followed by western blot with 67477-1-Ig (ERAP2 antibody) at dilution of 1:3000 incubated at room temperature for 1.5 hours.



Various lysates were subjected to SDS PAGE followed by western blot with 67477-1-Ig (ERAP2 antibody) at dilution of 1:2000 incubated at room temperature for 1.5 hours.