

For Research Use Only

MIS12 Monoclonal antibody

Catalog Number: 67475-1-Ig



Basic Information

Catalog Number: 67475-1-Ig	GenBank Accession Number: BC000229	Purification Method: Protein A purification
Size: 150ul , Concentration: 1800 µg/ml by Nanodrop and 1000 µg/ml by Bradford method using BSA as the standard;	GeneID (NCBI): 79003	CloneNo.: 2G5F6
Source: Mouse	Full Name: MIS12, MIND kinetochore complex component, homolog (yeast)	Recommended Dilutions: WB 1:1000-1:6000
Isotype: IgG2a	Calculated MW: 205 aa, 24 kDa	
Immunogen Catalog Number: AG16826	Observed MW: 25 kDa	

Applications

Tested Applications: WB,ELISA	Positive Controls: WB : HeLa cells, HEK-293 cells, HepG2 cells, Jurkat cells
Species Specificity: Human	

Background Information

Storage

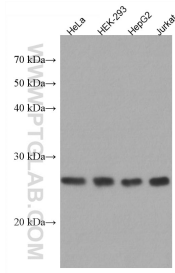
Storage:
Store at -20°C.
Storage Buffer:
PBS with 0.02% sodium azide and 50% glycerol pH 7.3.
Aliquoting is unnecessary for -20°C storage

*** 20ul sizes contain 0.1% BSA

For technical support and original validation data for this product please contact:
T: 1 (888) 4PTGLAB (1-888-478-4522) (toll free in USA), or 1(312) 455-8498 (outside USA)
E: proteintech@ptglab.com
W: ptglab.com

This product is exclusively available under Proteintech Group brand and is not available to purchase from any other manufacturer.

Selected Validation Data



Various lysates were subjected to SDS PAGE followed by western blot with 67475-1-Ig (MIS12 antibody) at dilution of 1:3000 incubated at room temperature for 1.5 hours.