

For Research Use Only

# MGME1 Monoclonal antibody

Catalog Number: 67468-1-Ig **1 Publications**



## Basic Information

<b>Catalog Number:</b> 67468-1-Ig	<b>GenBank Accession Number:</b> BC016869	<b>Purification Method:</b> Protein A purification
<b>Size:</b> 150ul , Concentration: 2100 µg/ml by Nanodrop and 1000 µg/ml by Bradford method using BSA as the standard;	<b>GeneID (NCBI):</b> 92667	<b>CloneNo.:</b> 2C4G1
<b>Source:</b> Mouse	<b>Full Name:</b> chromosome 20 open reading frame 72	<b>Recommended Dilutions:</b> WB 1:2000-1:10000 IHC 1:150-1:600
<b>Isotype:</b> IgG1	<b>Calculated MW:</b> 344 aa, 39 kDa	
<b>Immunogen Catalog Number:</b> AG19644	<b>Observed MW:</b> 36-39 kDa	

## Applications

**Tested Applications:**  
IHC, WB, ELISA

**Cited Applications:**  
WB

**Species Specificity:**  
Human

**Cited Species:**  
human

**Note-IHC: suggested antigen retrieval with TE buffer pH 9.0; (\*) Alternatively, antigen retrieval may be performed with citrate buffer pH 6.0**

**Positive Controls:**

**WB :** HeLa cells, HL-60 cells, HepG2 cells, LNCaP cells, A549 cells, Jurkat cells, K-562 cells

**IHC :** human lung cancer tissue, human colon cancer tissue

## Background Information

### Notable Publications

Author	Pubmed ID	Journal	Application
Feng Xiao	37166417	Aging (Albany NY)	WB

### Storage

**Storage:**

Store at -20°C. Stable for one year after shipment.

**Storage Buffer:**

PBS with 0.02% sodium azide and 50% glycerol pH 7.3.

Aliquoting is unnecessary for -20°C storage

\*\*\* 20ul sizes contain 0.1% BSA

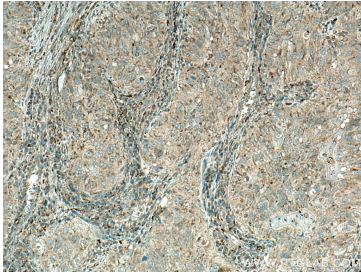
For technical support and original validation data for this product please contact:

T: 1 (888) 4PTGLAB (1-888-478-4522) (toll free in USA), or 1(312) 455-8498 (outside USA)

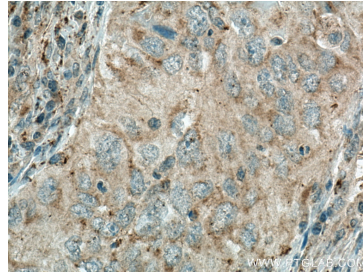
E: proteintech@ptglab.com  
W: ptglab.com

This product is exclusively available under Proteintech Group brand and is not available to purchase from any other manufacturer.

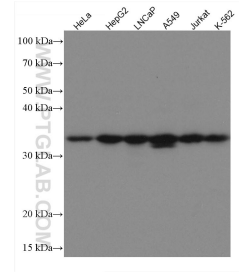
## Selected Validation Data



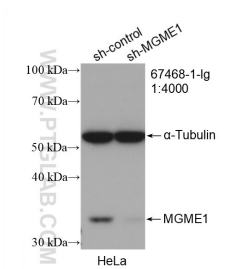
Immunohistochemical analysis of paraffin-embedded human lung cancer tissue slide using 67468-1-Ig (MGME1 antibody) at dilution of 1:300 (under 10x lens). Heat mediated antigen retrieval with Tris-EDTA buffer (pH 9.0).



Immunohistochemical analysis of paraffin-embedded human lung cancer tissue slide using 67468-1-Ig (MGME1 antibody) at dilution of 1:300 (under 40x lens). Heat mediated antigen retrieval with Tris-EDTA buffer (pH 9.0).



Various lysates were subjected to SDS PAGE followed by western blot with 67468-1-Ig (MGME1 antibody) at dilution of 1:5000 incubated at room temperature for 1.5 hours.



WB result of MGME1 antibody (67468-1-Ig; 1:4000; incubated at room temperature for 1.5 hours) with sh-Control and sh-MGME1 transfected HeLa cells.