

For Research Use Only

MESDC2 Monoclonal antibody

Catalog Number: 67441-1-Ig



Basic Information

Catalog Number: 67441-1-Ig	GenBank Accession Number: BC009210	Purification Method: Protein A purification
Size: 150ul, Concentration: 1800 µg/ml by Nanodrop and 1000 µg/ml by Bradford method using BSA as the standard;	GeneID (NCBI): 23184	CloneNo.: 1A2E7
Source: Mouse	Full Name: mesoderm development candidate 2	Recommended Dilutions: WB 1:1000-1:4000 IHC 1:1000-1:4000 IF 1:200-1:800
Isotype: IgG2a	Calculated MW: 26 kDa	
Immunogen Catalog Number: AG1403	Observed MW: 26 kDa	

Applications

Tested Applications:

IF, IHC, WB, ELISA

Species Specificity:

Human

**Note-IHC: suggested antigen retrieval with
TE buffer pH 9.0; (*) Alternatively, antigen
retrieval may be performed with citrate
buffer pH 6.0**

Positive Controls:

WB: JAR cells, Jurkat cells, A549 cells, HeLa cells

IHC: human placenta tissue,

IF: HEK-293 cells,

Background Information

Storage

Storage:

Store at -20°C.

Storage Buffer:

PBS with 0.02% sodium azide and 50% glycerol pH 7.3.

Aliquoting is unnecessary for -20°C storage

*** 20ul sizes contain 0.1% BSA

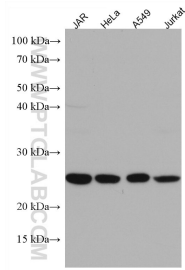
For technical support and original validation data for this product please contact:

T: 1 (888) 4PTGLAB (1-888-478-4522) (toll free
in USA), or 1(312) 455-8498 (outside USA)

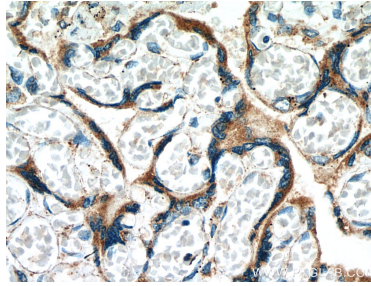
E: proteintech@ptglab.com
W: ptglab.com

This product is exclusively available under Proteintech Group brand and is not available to purchase from any other manufacturer.

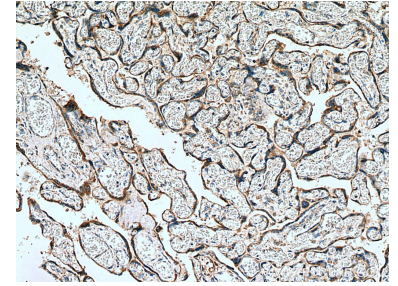
Selected Validation Data



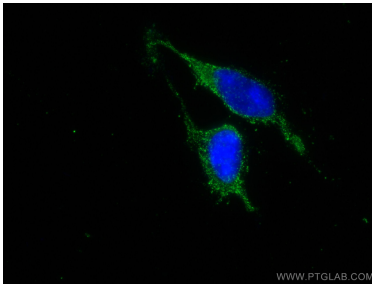
Various lysates were subjected to SDS PAGE followed by western blot with 67441-1-Ig (MESDC2 antibody) at dilution of 1:2000 incubated at room temperature for 1.5 hours.



Immunohistochemical analysis of paraffin-embedded human placenta tissue slide using 67441-1-Ig (MESDC2 antibody) at dilution of 1:2000 (under 40x lens). Heat mediated antigen retrieval with Tris-EDTA buffer (pH 9.0).



Immunohistochemical analysis of paraffin-embedded human placenta tissue slide using 67441-1-Ig (MESDC2 antibody) at dilution of 1:2000 (under 10x lens). Heat mediated antigen retrieval with Tris-EDTA buffer (pH 9.0).



Immunofluorescent analysis of (-20°C Ethanol) fixed HEK-293 cells using MESDC2 antibody (67441-1-Ig, Clone: 1A2E7) at dilution of 1:400 and CoraLite®488-Conjugated AffiniPure Goat Anti-Mouse IgG(H+L).