

For Research Use Only

# ERP44 Monoclonal antibody

Catalog Number:67426-1-Ig



## Basic Information

<b>Catalog Number:</b> 67426-1-Ig	<b>GenBank Accession Number:</b> BC005374	<b>Purification Method:</b> Protein G purification
<b>Size:</b> 150ul , Concentration: 900 ug/ml by Nanodrop and 500 ug/ml by Bradford method using BSA as the standard;	<b>GeneID (NCBI):</b> 23071	<b>CloneNo.:</b> 3A2C1
<b>Source:</b> Mouse	<b>UNIPROT ID:</b> Q9BS26	<b>Recommended Dilutions:</b> WB 1:5000-1:50000 IHC 1:500-1:2000
<b>Isotype:</b> IgG1	<b>Full Name:</b> endoplasmic reticulum protein 44	
<b>Immunogen Catalog Number:</b> AG8818	<b>Calculated MW:</b> 406 aa, 47 kDa	
	<b>Observed MW:</b> 44-47 kDa	

## Applications

**Tested Applications:**  
WB, IHC, ELISA

**Species Specificity:**  
Human, Mouse, Rat

**Note-IHC: suggested antigen retrieval with TE buffer pH 9.0; (\*) Alternatively, antigen retrieval may be performed with citrate buffer pH 6.0**

**Positive Controls:**

**WB :** HeLa cells, HSC-T6 cells, HEK-293 cells, HepG2 cells, Jurkat cells, NIH/3T3 cells, 4T1 cells

**IHC :** human breast cancer tissue, human liver cancer tissue

## Background Information

TXNDC4 is also named as KIAA0573, ERP44, PDIA10, ERp44 and belongs to the thioredoxin family (TRX). It may be involved in electron transport, protein folding, response to unfolded protein, glycoprotein metabolism, secretory pathway. It may have a role in the control of oxidative protein folding in the endoplasmic reticulum.

## Storage

**Storage:**  
Store at -20°C.  
**Storage Buffer:**  
PBS with 0.02% sodium azide and 50% glycerol pH 7.3.  
Aliquoting is unnecessary for -20°C storage

\*\*\* 20ul sizes contain 0.1% BSA

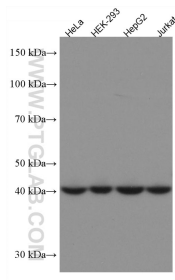
For technical support and original validation data for this product please contact:

T: 1 (888) 4PTGLAB (1-888-478-4522) (toll free in USA), or 1(312) 455-8498 (outside USA)

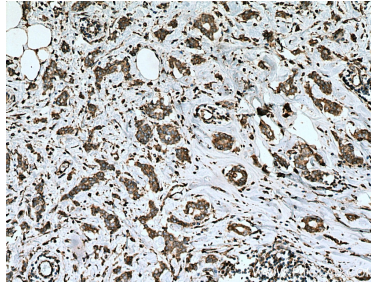
E: proteintech@ptglab.com  
W: ptglab.com

This product is exclusively available under Proteintech Group brand and is not available to purchase from any other manufacturer.

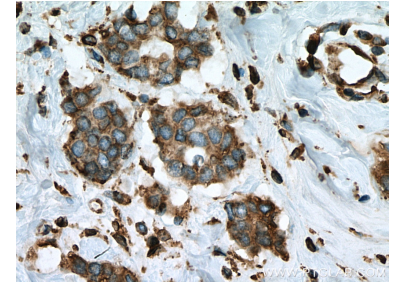
## Selected Validation Data



Various lysates were subjected to SDS PAGE followed by western blot with 67426-1-Ig (ERP44 antibody) at dilution of 1:10000 incubated at room temperature for 1.5 hours.



Immunohistochemical analysis of paraffin-embedded human breast cancer tissue slide using 67426-1-Ig (ERP44 antibody) at dilution of 1:1000 (under 10x lens). Heat mediated antigen retrieval with Tris-EDTA buffer (pH 9.0).



Immunohistochemical analysis of paraffin-embedded human breast cancer tissue slide using 67426-1-Ig (ERP44 antibody) at dilution of 1:1000 (under 40x lens). Heat mediated antigen retrieval with Tris-EDTA buffer (pH 9.0).