

For Research Use Only

# RBM39 Monoclonal antibody

Catalog Number: 67420-1-Ig



## Basic Information

<b>Catalog Number:</b> 67420-1-Ig	<b>GenBank Accession Number:</b> BC141835	<b>Purification Method:</b> Protein A purification
<b>Size:</b> 150ul , Concentration: 1000 µg/ml by Nanodrop and 483 µg/ml by Bradford method using BSA as the standard;	<b>GeneID (NCBI):</b> 9584	<b>CloneNo.:</b> 2D2C8
<b>Source:</b> Mouse	<b>Full Name:</b> RNA binding motif protein 39	<b>Recommended Dilutions:</b> WB 1:5000-1:50000 IHC 1:150-1:600 IF 1:50-1:500
<b>Isotype:</b> IgG2b	<b>Calculated MW:</b> 530 aa, 59 kDa	
<b>Immunogen Catalog Number:</b> AG15766	<b>Observed MW:</b> 60-66 kDa	

## Applications

<b>Tested Applications:</b> IF, IHC, WB, ELISA	<b>Positive Controls:</b>
<b>Species Specificity:</b> Human, mouse, rat	<b>WB :</b> Caco-2 cells, HeLa cells, LNCaP cells, HEK-293 cells, HepG2 cells, Jurkat cells, HSC-T6 cells, NIH/3T3 cells, Neuro-2a cells
<b>Note-IHC: suggested antigen retrieval with TE buffer pH 9.0; (*) Alternatively, antigen retrieval may be performed with citrate buffer pH 6.0</b>	<b>IHC :</b> human breast cancer tissue, <b>IF :</b> HepG2 cells,

## Background Information

RBM39, also named as HCC1 or RNPC2, is a 530 amino acid protein, which contains three RRM (RNA recognition motif) domains and belongs to the splicing factor SR family. RBM39 is widely expressed in various tissues and with highly expression in pancreas, skeletal muscle, lung and brain. RBM39 is a transcriptional coactivator for steroid nuclear receptors ESR1/ER-alpha and ESR2/ER-beta, and JUN/AP-1. RBM39 may be involved in pre-mRNA splicing process.

## Storage

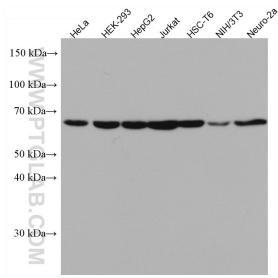
**Storage:**  
Store at -20°C. Stable for one year after shipment.  
**Storage Buffer:**  
PBS with 0.02% sodium azide and 50% glycerol pH 7.3.  
**Aliquoting is unnecessary for -20°C storage**

**\*\*\* 20ul sizes contain 0.1% BSA**

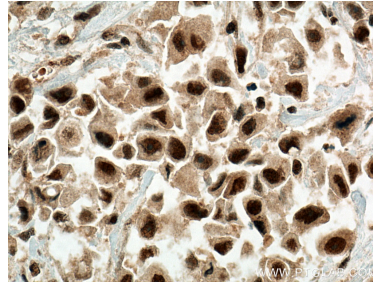
For technical support and original validation data for this product please contact:  
T: 1 (888) 4PTGLAB (1-888-478-4522) (toll free in USA), or 1(312) 455-8498 (outside USA)  
E: proteintech@ptglab.com  
W: ptglab.com

**This product is exclusively available under Proteintech Group brand and is not available to purchase from any other manufacturer.**

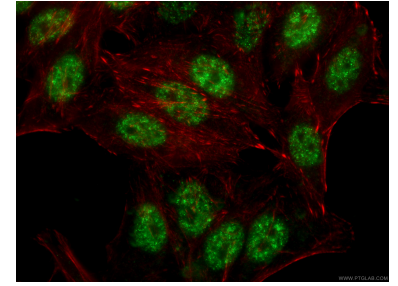
## Selected Validation Data



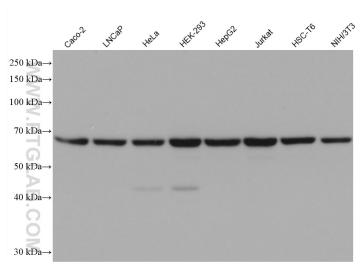
Various lysates were subjected to SDS PAGE followed by western blot with 67420-1-Ig (RBM39 antibody) at dilution of 1:2500 incubated at room temperature for 1.5 hours.



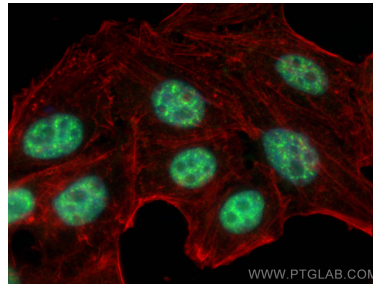
Immunohistochemical analysis of paraffin-embedded human breast cancer tissue slide using 67420-1-Ig (RBM39 antibody) at dilution of 1:300 (under 40x lens). Heat mediated antigen retrieval with Tris-EDTA buffer (pH 9.0).



Immunofluorescent analysis of (-20°C Ethanol) fixed HepG2 cells using 67420-1-Ig (RBM39 antibody), at dilution of 1:200 and CoraLite® 488-Conjugated AffiniPure Goat Anti-Mouse IgG(H+L).



Various lysates were subjected to SDS PAGE followed by western blot with 67420-1-Ig (RBM39 antibody) at dilution of 1:10000 incubated at room temperature for 1.5 hours.



Immunofluorescent analysis of (4% PFA) fixed HepG2 cells using RBM39 antibody (67420-1-Ig, Clone: 2D2C8 ) at dilution of 1:2000 and CoraLite® 488-Conjugated AffiniPure Goat Anti-Mouse IgG(H+L), CL594-phalloidin (red).