

For Research Use Only

SYNPO Monoclonal antibody

Catalog Number: 67339-1-Ig **2 Publications**



Basic Information

Catalog Number: 67339-1-Ig	GenBank Accession Number: BC146665	Purification Method: Protein G purification
Size: 150ul , Concentration: 1800 µg/ml by Nanodrop and 1000 µg/ml by Bradford method using BSA as the standard;	GeneID (NCBI): 11346	CloneNo.: 1E1B1
Source: Mouse	Full Name: synaptopodin	Recommended Dilutions: WB 1:2000-1:10000 IHC 1:750-1:3000 IF 1:200-1:800
Isotype: IgG1	Calculated MW: 929 aa, 99 kDa	
Immunogen Catalog Number: AG15089	Observed MW: 100-110 kDa	

Applications

Tested Applications: IF, IHC, WB, ELISA	Positive Controls: WB : rat brain tissue, pig brain tissue, mouse brain tissue IHC : rat brain tissue, mouse kidney tissue, human kidney tissue IF : mouse brain tissue,
Cited Applications: WB	
Species Specificity: Human, mouse, rat, pig	
Cited Species: mouse	

Note-IHC: suggested antigen retrieval with TE buffer pH 9.0; (*) Alternatively, antigen retrieval may be performed with citrate buffer pH 6.0

Background Information

Synaptopodin is a actin-associated protein expressed in mature dendritic spines and renal podocytes. Several isoforms of synaptopodin have been reported: the 100 kDa neural form and 110 kDa renal form. 44-45 kDa may represent the degradation product of synaptopodin. As a podocyte specific protein, synaptopodin expression level was decreased in kidney but increased in the urinary podocytes from patients with preeclampsia, indicating that synaptopodin is a useful marker for preeclampsia. (15841212, 10555072)

Notable Publications

Author	Pubmed ID	Journal	Application
Shan Song	35908070	Cell Death Dis	WB
Chunkai Huang	35478960	Front Cell Dev Biol	WB

Storage

Storage:
Store at -20°C.
Storage Buffer:
PBS with 0.02% sodium azide and 50% glycerol pH 7.3.
Aliquoting is unnecessary for -20°C storage

*** 20ul sizes contain 0.1% BSA

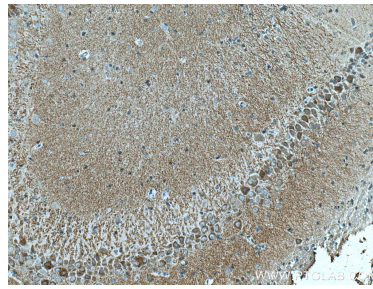
For technical support and original validation data for this product please contact:
T: 1 (888) 4PTGLAB (1-888-478-4522) (toll free in USA), or 1(312) 455-8498 (outside USA)
E: proteintech@ptglab.com
W: ptglab.com

This product is exclusively available under Proteintech Group brand and is not available to purchase from any other manufacturer.

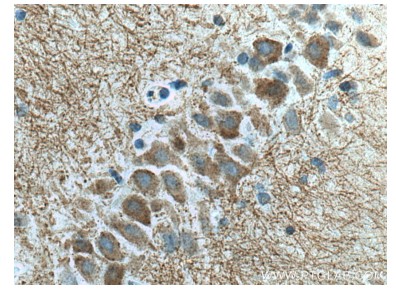
Selected Validation Data



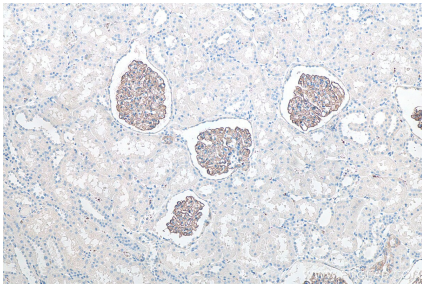
rat brain tissue were subjected to SDS PAGE followed by western blot with 67339-1-Ig (SYNPO antibody) at dilution of 1:5000 incubated at room temperature for 1.5 hours.



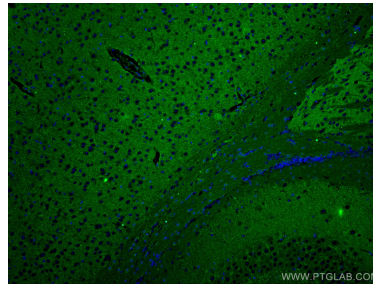
Immunohistochemical analysis of paraffin-embedded rat brain tissue slide using 67339-1-Ig (SYNPO antibody) at dilution of 1:1500 (under 10x lens). Heat mediated antigen retrieval with Tris-EDTA buffer (pH 9.0).



Immunohistochemical analysis of paraffin-embedded rat brain tissue slide using 67339-1-Ig (SYNPO antibody) at dilution of 1:1500 (under 40x lens). Heat mediated antigen retrieval with Tris-EDTA buffer (pH 9.0).



Immunohistochemical analysis of paraffin-embedded human kidney tissue slide using 67339-1-Ig (SYNPO antibody) at dilution of 1:8000 (under 10x lens). Heat mediated antigen retrieval with Tris-EDTA buffer (pH 9.0).



Immunofluorescent analysis of (4% PFA) fixed mouse brain tissue using SYNPO antibody (67339-1-Ig, Clone: 1E1B1) at dilution of 1:400 and Coralite®488-Conjugated AffiniPure Goat Anti-Mouse IgG(H+L).