

For Research Use Only

ODC1 Monoclonal antibody

Catalog Number: 67336-1-Ig

Featured Product

1 Publications



Basic Information

Catalog Number:

67336-1-Ig

Size:

150ul, Concentration: 2000 ug/ml by Nanodrop and 940 ug/ml by Bradford method using BSA as the standard;

Source:

Mouse

Isotype:

IgG1

Immunogen Catalog Number:

AG10927

GenBank Accession Number:

BC025296

GeneID (NCBI):

4953

UNIPROT ID:

P11926

Full Name:

ornithine decarboxylase 1

Calculated MW:

461 aa, 51 kDa

Observed MW:

51 kDa

Purification Method:

Protein G purification

CloneNo.:

2A1E3

Recommended Dilutions:

WB 1:5000-1:50000

IF/ICC 1:500-1:2000

Applications

Tested Applications:

WB, IF/ICC, ELISA

Cited Applications:

WB

Species Specificity:

human

Cited Species:

mouse

Positive Controls:

WB : MCF-7 cells, HUVEC cells, human placenta tissue

IF/ICC : MCF-7 cells,

Background Information

Ornithine decarboxylase (ODC) is also named as ODC1 and belongs to the Orn/Lys/Arg decarboxylase class-II family. It catalyzes the conversion of ornithine to putrescine, the first step and a major site of regulation of polyamine biosynthesis. The level of ODC is known to be controlled at several sites, namely transcription, translation, and enzyme degradation. Polyamines can stimulate the degradation of ODC as a type of negative feedback control (PMID:8486633). This protein can be phosphorylated in vivo (PMID:8798774). ODC1 can form a homodimer and only the dimer is catalytically active, as the active sites are constructed of residues from both monomers (PMID: 10623504). The molecular mass of ODC1 is 51 kDa, and the homodimer is 106 kDa.

Notable Publications

Author	Pubmed ID	Journal	Application
Tingting Li	38657365	J Pharm Biomed Anal	WB

Storage

Storage:

Store at -20°C. Stable for one year after shipment.

Storage Buffer:

PBS with 0.02% sodium azide and 50% glycerol, pH7.3

Aliquoting is unnecessary for -20°C storage

*** 20ul sizes contain 0.1% BSA

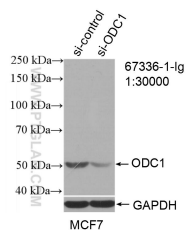
For technical support and original validation data for this product please contact:

T: 1 (888) 4PTGLAB (1-888-478-4522) (toll free in USA), or 1(312) 455-8498 (outside USA)

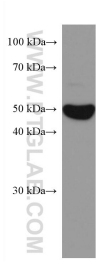
E: proteintech@ptglab.com
W: ptglab.com

This product is exclusively available under Proteintech Group brand and is not available to purchase from any other manufacturer.

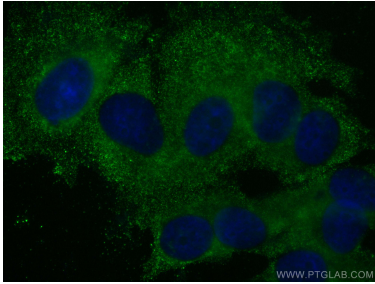
Selected Validation Data



WB result of ODC1 antibody (67336-1-Ig; 1:30000; incubated at room temperature for 1.5 hours) with sh-Control and sh-ODC1 transfected MCF-7 cells.



MCF-7 cells were subjected to SDS PAGE followed by western blot with 67336-1-Ig (ODC1 antibody) at dilution of 1:10000 incubated at room temperature for 1.5 hours.



Immunofluorescent analysis of (-20°C Methanol) fixed MCF-7 cells using ODC1 antibody (67336-1-Ig, Clone: 2A1E3) at dilution of 1:1000 and CoraLite®488-Conjugated AffiniPure Goat Anti-Mouse IgG(H+L) (SA00013-1).