

For Research Use Only

# HSP20 Monoclonal antibody

Catalog Number: 67327-1-Ig **1 Publications**



## Basic Information

<b>Catalog Number:</b> 67327-1-Ig	<b>GenBank Accession Number:</b> BC068046	<b>Purification Method:</b> Protein A purification
<b>Size:</b> 150ul , Concentration: 1700 µg/ml by Nanodrop and 1000 µg/ml by Bradford method using BSA as the standard;	<b>GeneID (NCBI):</b> 126393	<b>CloneNo.:</b> 1G7D2
<b>Source:</b> Mouse	<b>UNIPROT ID:</b> O14558	<b>Recommended Dilutions:</b> WB 1:2000-1:20000 IHC 1:500-1:2000 IF 1:200-1:800
<b>Isotype:</b> IgG2a	<b>Full Name:</b> heat shock protein, alpha-crystallin-related, B6	
<b>Immunogen Catalog Number:</b> AG10484	<b>Calculated MW:</b> 160 aa, 17 kDa	
	<b>Observed MW:</b> 17 kDa	

## Applications

### Tested Applications:

IF, IHC, WB, ELISA

### Cited Applications:

IHC

### Species Specificity:

Human, mouse, rat, pig

### Cited Species:

human

**Note-IHC: suggested antigen retrieval with TE buffer pH 9.0; (\*) Alternatively, antigen retrieval may be performed with citrate buffer pH 6.0**

### Positive Controls:

**WB** : pig skeletal muscle tissue, mouse heart tissue, rat heart tissue, mouse skeletal muscle tissue, rat skeletal muscle tissue

**IHC** : human heart tissue,

**IF** : mouse heart tissue,

## Background Information

Hsp20 is a member of the small heat shock superfamily of proteins that function as chaperones to prevent protein misfolding through adenosine triphosphate-independent processes. It is widely expressed but is most abundant in cardiac, skeletal, and smooth muscles. Phosphorylation of HSP20 at Ser16 was elevated in human failing hearts as well as in murine hearts after I/R injury indicating its cardioprotective function.

## Notable Publications

Author	Pubmed ID	Journal	Application
Shiqi Gao	38237739	Lab Invest	IHC

## Storage

### Storage:

Store at -20°C. Stable for one year after shipment.

### Storage Buffer:

PBS with 0.02% sodium azide and 50% glycerol pH 7.3.

Aliquoting is unnecessary for -20°C storage

**\*\*\* 20ul sizes contain 0.1% BSA**

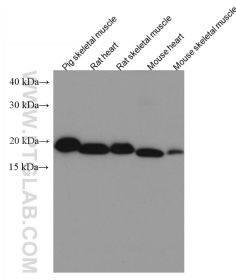
For technical support and original validation data for this product please contact:

T: 1 (888) 4PTGLAB (1-888-478-4522) (toll free in USA), or 1(312) 455-8498 (outside USA)

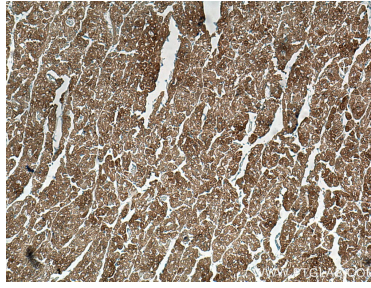
E: [proteintech@ptglab.com](mailto:proteintech@ptglab.com)  
W: [ptglab.com](http://ptglab.com)

**This product is exclusively available under Proteintech Group brand and is not available to purchase from any other manufacturer.**

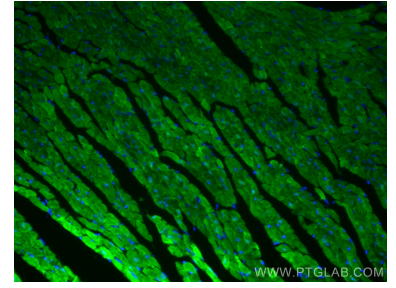
## Selected Validation Data



Various lysates were subjected to SDS PAGE followed by western blot with 67327-1-Ig (HSP20 antibody) at dilution of 1:10000 incubated at room temperature for 1.5 hours.



Immunohistochemical analysis of paraffin-embedded human heart tissue slide using 67327-1-Ig (HSP20 antibody) at dilution of 1:1000 (under 10x lens). Heat mediated antigen retrieval with Tris-EDTA buffer (pH 9.0).



Immunofluorescent analysis of (4% PFA) fixed mouse heart tissue using HSP20 antibody (67327-1-Ig, Clone: 1G7D2) at dilution of 1:400 and CoraLite®488-Conjugated AffiniPure Goat Anti-Mouse IgG(H+L).