

For Research Use Only

TFE3 Monoclonal antibody

Catalog Number: 67319-1-Ig



Basic Information

Catalog Number: 67319-1-Ig	GenBank Accession Number: BC026027	Purification Method: Protein A purification
Size: 150ul , Concentration: 2400 µg/ml by Nanodrop and 1000 µg/ml by Bradford method using BSA as the standard;	GeneID (NCBI): 7030	CloneNo.: 1E3D7
Source: Mouse	Full Name: transcription factor binding to IGHM enhancer 3	Recommended Dilutions: WB 1:1000-1:4000 IHC 1:50-1:500
Isotype: IgG1	Calculated MW: 62 kDa	
Immunogen Catalog Number: AG6320	Observed MW: 70 kDa	

Applications

Tested Applications:

IHC, WB, ELISA

Species Specificity:

Human, mouse, rat, pig

**Note-IHC: suggested antigen retrieval with
TE buffer pH 9.0; (*) Alternatively, antigen
retrieval may be performed with citrate
buffer pH 6.0**

Positive Controls:

WB : HEK-293 cells, C2C12 cells, pig spleen tissue,
HeLa cells, Raji cells, K-562 cells, rat spleen tissue

IHC : human malignant melanoma tissue,

Background Information

Storage

Storage:

Store at -20°C. Stable for one year after shipment.

Storage Buffer:

PBS with 0.02% sodium azide and 50% glycerol pH 7.3.

Aliquoting is unnecessary for -20°C storage

*** 20ul sizes contain 0.1% BSA

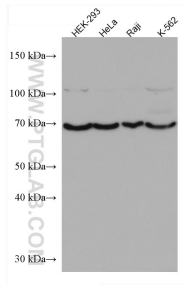
For technical support and original validation data for this product please contact:

T: 1 (888) 4PTGLAB (1-888-478-4522) (toll free
in USA), or 1(312) 455-8498 (outside USA)

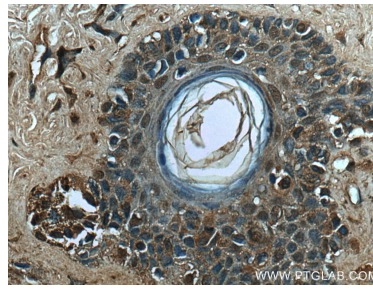
E: proteintech@ptglab.com
W: ptglab.com

This product is exclusively available under Proteintech
Group brand and is not available to purchase from any
other manufacturer.

Selected Validation Data



Various lysates were subjected to SDS PAGE followed by western blot with 67319-1-Ig (TFE3 antibody) at dilution of 1:2000 incubated at room temperature for 1.5 hours.



Immunohistochemical analysis of paraffin-embedded human malignant melanoma tissue slide using 67319-1-Ig (TFE3 antibody) at dilution of 1:200 (under 40x lens)..