

For Research Use Only

INA Monoclonal antibody

Catalog Number: 67120-1-Ig



Basic Information

Catalog Number: 67120-1-Ig	GenBank Accession Number: BC006359	Purification Method: Protein A purification
Size: 150ul , Concentration: 2000 µg/ml by Nanodrop and 1000 µg/ml by Bradford method using BSA as the standard;	GeneID (NCBI): 9118	CloneNo.: 3C12A8
Source: Mouse	Full Name: internexin neuronal intermediate filament protein, alpha	Recommended Dilutions: WB 1:1000-1:6000 IHC 1:300-1:1200
Isotype: IgG2a	Calculated MW: 55 kDa	
Immunogen Catalog Number: AG13655	Observed MW: 60-66 kDa	

Applications

Tested Applications:

IHC, WB, ELISA

Species Specificity:

Human, Mouse, Rat, Pig

**Note-IHC: suggested antigen retrieval with
TE buffer pH 9.0; (*) Alternatively, antigen
retrieval may be performed with citrate
buffer pH 6.0**

Positive Controls:

WB : fetal human brain tissue, rat cerebellum tissue,
pig brain tissue, rat brain tissue, mouse brain tissue

IHC : human pancreas cancer tissue,

Background Information

INA, also named as Alpha internexin, is a 66 kDa intermediate filament protein which is involved in the morphogenesis of neurons. INA is mainly expressed in various kinds of central and peripheral neurons from early development and highly expressed in neurodegenerative and neuronal death cells. The MW of INA ranges from 60 kDa in human, pig and mouse to 66 kDa in rat.(PMID: 29940892, 2201753)

Storage

Storage:

Store at -20°C. Stable for one year after shipment.

Storage Buffer:

PBS with 0.02% sodium azide and 50% glycerol pH 7.3.

Aliquoting is unnecessary for -20°C storage

*** 20ul sizes contain 0.1% BSA

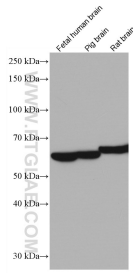
For technical support and original validation data for this product please contact:

T: 1 (888) 4PTGLAB (1-888-478-4522) (toll free
in USA), or 1(312) 455-8498 (outside USA)

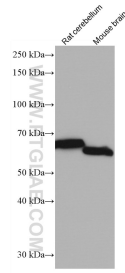
E: proteintech@ptglab.com
W: ptglab.com

This product is exclusively available under Proteintech Group brand and is not available to purchase from any other manufacturer.

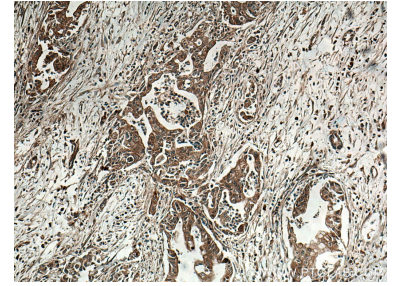
Selected Validation Data



Various lysates were subjected to SDS PAGE followed by western blot with 67120-1-Ig (INA antibody) at dilution of 1:3000 incubated at room temperature for 1.5 hours.



Various lysates were subjected to SDS PAGE followed by western blot with 67120-1-Ig (INA antibody) at dilution of 1:3000 incubated at room temperature for 1.5 hours.



Immunohistochemical analysis of paraffin-embedded human pancreas cancer tissue slide using 67120-1-Ig (INA antibody) at dilution of 1:600 (under 10x lens. Heat mediated antigen retrieval with Tris-EDTA buffer (pH 9.0).