

For Research Use Only

L1CAM Monoclonal antibody

Catalog Number: 67115-1-Ig



Basic Information

Catalog Number: 67115-1-Ig	GenBank Accession Number: BC126229	Purification Method: Protein A purification
Size: 150ul , Concentration: 1800 µg/ml by Nanodrop and 1000 µg/ml by Bradford method using BSA as the standard;	GeneID (NCBI): 3897	CloneNo.: 3H7B9
Source: Mouse	Full Name: L1 cell adhesion molecule	Recommended Dilutions: WB 1:5000-1:50000 IHC 1:250-1:1000 IF 1:200-1:800
Isotype: IgG1	Calculated MW: 1257 aa, 140 kDa	
Immunogen Catalog Number: AG17706	Observed MW: 220 kDa	

Applications

Tested Applications:

IF, IHC, WB, ELISA

Species Specificity:

Human, Pig, Mouse, Rat, Rabbit

Note-IHC: suggested antigen retrieval with TE buffer pH 9.0; (*) Alternatively, antigen retrieval may be performed with citrate buffer pH 6.0

Positive Controls:

WB : pig brain tissue, pig cerebellum tissue, Rabbit brain tissue, rat brain tissue, mouse brain tissue

IHC : human brain tissue, mouse brain tissue

IF : mouse brain tissue,

Background Information

L1CAM, also known as NCAM-L1 or CD171, is a cell adhesion molecule of the immunoglobulin superfamily. It is a 200-220 kDa transmembrane glycoprotein composed of six Ig-like domains and five fibronectin type III repeats followed by a transmembrane region and a highly conserved cytoplasmic tail (PMID: 3412448; 22796939). L1CAM is primarily expressed in the nervous system and is involved in neuron-neuron adhesion, neurite fasciculation, outgrowth of neurites, cerebellar granule cell migration, neurite outgrowth on Schwann cells and interactions among epithelial cells of intestinal crypts (PMID: 3412448; 10767310). L1CAM is overexpressed in many human cancers and is often associated with bad prognosis (PMID: 27267927; 26111503).

Storage

Storage:

Store at -20°C. Stable for one year after shipment.

Storage Buffer:

PBS with 0.02% sodium azide and 50% glycerol pH 7.3.

Aliquoting is unnecessary for -20°C storage

***** 20ul sizes contain 0.1% BSA**

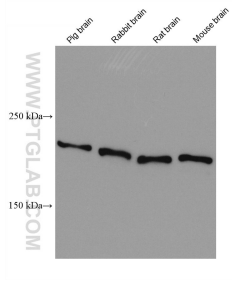
For technical support and original validation data for this product please contact:

T: 1 (888) 4PTGLAB (1-888-478-4522) (toll free in USA), or 1(312) 455-8498 (outside USA)

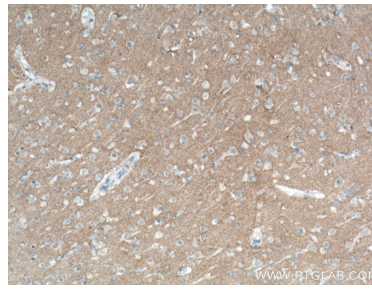
E: proteintech@ptglab.com
W: ptglab.com

This product is exclusively available under Proteintech Group brand and is not available to purchase from any other manufacturer.

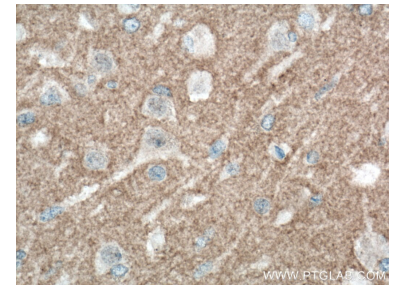
Selected Validation Data



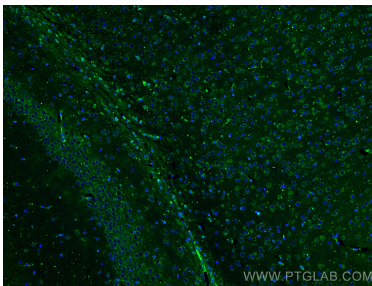
Various lysates were subjected to SDS PAGE followed by western blot with 67115-1-Ig (L1CAM antibody) at dilution of 1:10000 incubated at room temperature for 1.5 hours.



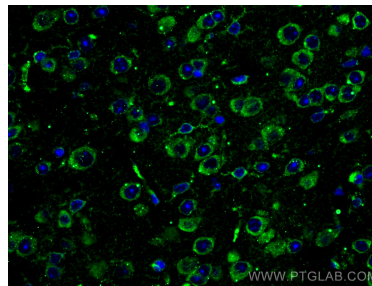
Immunohistochemical analysis of paraffin-embedded human brain tissue slide using 67115-1-Ig (L1CAM antibody) at dilution of 1:500 (under 10x lens). Heat mediated antigen retrieval with Tris-EDTA buffer (pH 9.0).



Immunohistochemical analysis of paraffin-embedded human brain tissue slide using 67115-1-Ig (L1CAM antibody) at dilution of 1:500 (under 40x lens). Heat mediated antigen retrieval with Tris-EDTA buffer (pH 9.0).



Immunofluorescent analysis of (4% PFA) fixed mouse brain tissue using L1CAM antibody (67115-1-Ig, Clone: 3H7B9) at dilution of 1:400 and CoraLite®488-Conjugated AffiniPure Goat Anti-Mouse IgG(H+L).



Immunofluorescent analysis of (4% PFA) fixed mouse brain tissue using L1CAM antibody (67115-1-Ig, Clone: 3H7B9) at dilution of 1:400 and CoraLite®488-Conjugated AffiniPure Goat Anti-Mouse IgG(H+L).