

For Research Use Only

# fetuin-B Monoclonal antibody

Catalog Number: 67002-1-Ig **2 Publications**



## Basic Information

<b>Catalog Number:</b> 67002-1-Ig	<b>GenBank Accession Number:</b> BC074734	<b>Purification Method:</b> Protein A purification
<b>Size:</b> 150ul , Concentration: 2000 µg/ml by Nanodrop and 1000 µg/ml by Bradford method using BSA as the standard;	<b>GeneID (NCBI):</b> 26998	<b>CloneNo.:</b> 2H7D11
<b>Source:</b> Mouse	<b>Full Name:</b> fetuin B	<b>Recommended Dilutions:</b> WB 1:5000-1:50000 IHC 1:150-1:600 IF 1:200-1:800
<b>Isotype:</b> IgG2b	<b>Calculated MW:</b> 382 aa, 42 kDa	
<b>Immunogen Catalog Number:</b> AG12463	<b>Observed MW:</b> 50 kDa	

## Applications

<b>Tested Applications:</b> IF, IHC, WB, ELISA	<b>Positive Controls:</b>
<b>Cited Applications:</b> WB	<b>WB :</b> human blood tissue,
<b>Species Specificity:</b> Human, Pig	<b>IHC :</b> human liver tissue,
<b>Cited Species:</b> human, mouse	<b>IF :</b> human liver cancer tissue,

**Note-IHC: suggested antigen retrieval with TE buffer pH 9.0; (\*) Alternatively, antigen retrieval may be performed with citrate buffer pH 6.0**

## Background Information

Fetuin-B is a protein that in humans is encoded by the FETUB gene. The protein encoded by this gene is a member of the fetuin family, part of the cystatin superfamily

## Notable Publications

Author	Pubmed ID	Journal	Application
Manhong Xu	34919406	J Proteome Res	WB
Yan Xing	34406004	J Agric Food Chem	WB

## Storage

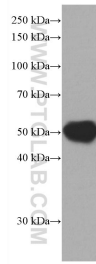
**Storage:**  
Store at -20°C.  
**Storage Buffer:**  
PBS with 0.02% sodium azide and 50% glycerol pH 7.3.  
Aliquoting is unnecessary for -20°C storage

**\*\*\* 20ul sizes contain 0.1% BSA**

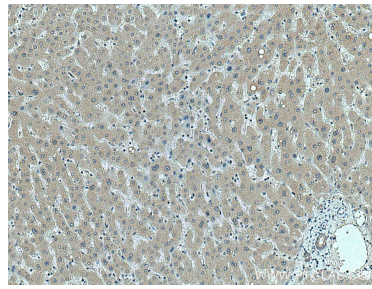
For technical support and original validation data for this product please contact:  
T: 1 (888) 4PTGLAB (1-888-478-4522) (toll free in USA), or 1(312) 455-8498 (outside USA)  
E: proteintech@ptglab.com  
W: ptglab.com

**This product is exclusively available under Proteintech Group brand and is not available to purchase from any other manufacturer.**

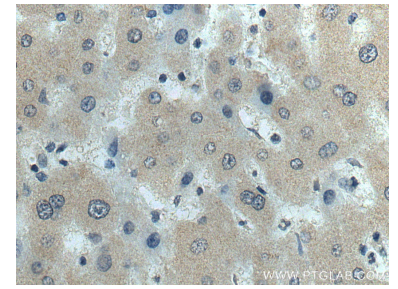
## Selected Validation Data



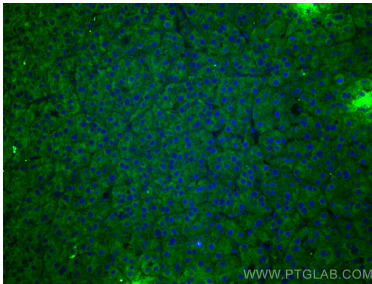
human blood were subjected to SDS PAGE followed by western blot with 67002-1-Ig (fetuin-B antibody) at dilution of 1:10000 incubated at room temperature for 1.5 hours.



Immunohistochemical analysis of paraffin-embedded human liver tissue slide using 67002-1-Ig (fetuin-B antibody) at dilution of 1:300 (under 10x lens. Heat mediated antigen retrieval with Tris-EDTA buffer (pH 9.0).



Immunohistochemical analysis of paraffin-embedded human liver tissue slide using 67002-1-Ig (fetuin-B antibody) at dilution of 1:300 (under 40x lens. Heat mediated antigen retrieval with Tris-EDTA buffer (pH 9.0).



Immunofluorescent analysis of (4% PFA) fixed human liver cancer tissue using fetuin-B antibody (67002-1-Ig, Clone: 2H7D11) at dilution of 1:400 and CoraLite®488-Conjugated AffiniPure Goat Anti-Mouse IgG(H+L).