

For Research Use Only

IMP3 Monoclonal antibody

Catalog Number: 66247-1-Ig



Basic Information

Catalog Number: 66247-1-Ig	GenBank Accession Number: BC020557	Purification Method: Protein A purification
Size: 150ul , Concentration: 3300 µg/ml by Nanodrop and 1733 µg/ml by Bradford method using BSA as the standard;	GeneID (NCBI): 55272	CloneNo.: 1E7D6
Source: Mouse	Full Name: IMP3, U3 small nucleolar ribonucleoprotein, homolog (yeast)	Recommended Dilutions: WB 1:1000-1:4000 IHC 1:50-1:500 IF 1:200-1:800
Isotype: IgG2b	Calculated MW: 184 aa, 22 kDa	
Immunogen Catalog Number: AG23602	Observed MW: 22 kDa	

Applications

Tested Applications:

FC, IF, IHC, WB, ELISA

Species Specificity:

human, mouse

**Note-IHC: suggested antigen retrieval with
TE buffer pH 9.0; (*) Alternatively, antigen
retrieval may be performed with citrate
buffer pH 6.0**

Positive Controls:

WB : HeLa cells, HepG2 cells, SKOV-3 cells

IHC : human breast cancer tissue,

IF : HepG2 cells,

Background Information

IMP3 is a member of the insulin-like growth factor (IGF-II) mRNA binding protein (IMP) family that consist of IMP1, IMP2, and IMP3. IMP3 is an oncofetal protein associated with aggressive and advanced tumors and is specifically expressed in malignant tumors but not found in benign tissues [PMID:22497850]. IMP3 forms a ternary complex with IMP4 and MPP10 (MPHOSPH10) that interacts with U3 small nucleolar RNA (snoRNA), which is required for the early cleavage steps in pre-rRNA processing [PMID: 12655004].

Storage

Storage:

Store at -20°C. Stable for one year after shipment.

Storage Buffer:

PBS with 0.02% sodium azide and 50% glycerol pH 7.3.

Aliquoting is unnecessary for -20°C storage

***** 20ul sizes contain 0.1% BSA**

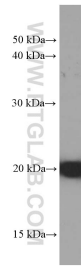
For technical support and original validation data for this product please contact:

T: 1 (888) 4PTGLAB (1-888-478-4522) (toll free
in USA), or 1(312) 455-8498 (outside USA)

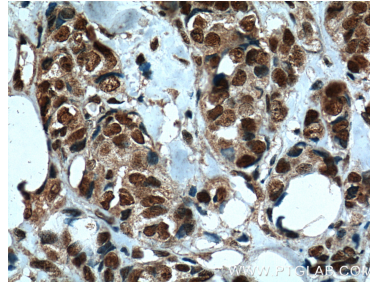
E: proteintech@ptglab.com
W: ptglab.com

**This product is exclusively available under Proteintech
Group brand and is not available to purchase from any
other manufacturer.**

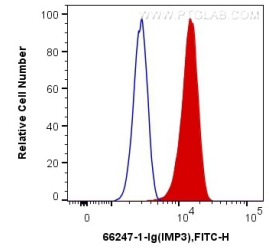
Selected Validation Data



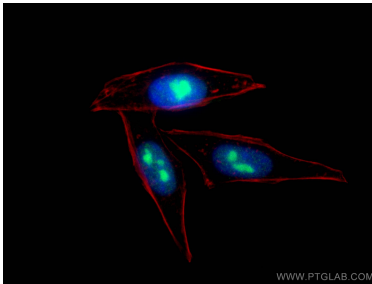
HeLa cells were subjected to SDS PAGE followed by western blot with 66247-1-Ig (IMP3 Antibody) at dilution of 1:2000 incubated at room temperature for 1.5 hours.



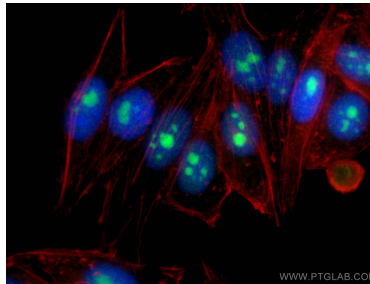
Immunohistochemical analysis of paraffin-embedded human breast cancer tissue slide using 66247-1-Ig (IMP3 Antibody) at dilution of 1:200 (under 40x lens). Heat mediated antigen retrieval with Tris-EDTA buffer (pH 9.0).



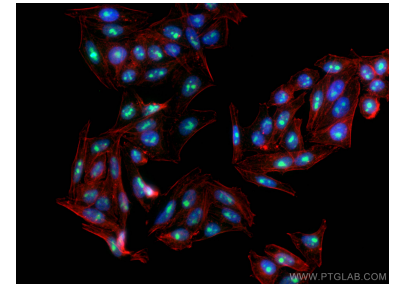
1×10^6 HepG2 cells were intracellularly stained with 0.2 ug Anti-Human IMP3 (66247-1-Ig, Clone:1E7D6) and CoraLite®488-Conjugated AffiniPure Goat Anti-Mouse IgG(H+L) at dilution 1:1000 (red), or 0.2 ug Control Antibody. Cells were fixed and permeabilized with Transcription Factor Staining Buffer Kit (PF00011).



Immunofluorescent analysis of (4% PFA) fixed HepG2 cells using IMP3 antibody (66247-1-Ig, Clone: 1E7D6) at dilution of 1:400 and CoraLite®488-Conjugated AffiniPure Goat Anti-Mouse IgG(H+L), CL594-Phalloidin (red).



Immunofluorescent analysis of (4% PFA) fixed HepG2 cells using IMP3 antibody (66247-1-Ig, Clone: 1E7D6) at dilution of 1:400 and CoraLite®488-Conjugated AffiniPure Goat Anti-Mouse IgG(H+L), CL594-Phalloidin (red).



Immunofluorescent analysis of (4% PFA) fixed HepG2 cells using IMP3 antibody (66247-1-Ig, Clone: 1E7D6) at dilution of 1:400 and CoraLite®488-Conjugated AffiniPure Goat Anti-Mouse IgG(H+L), CL594-Phalloidin (red).