

For Research Use Only

FKBP2 Monoclonal antibody

Catalog Number: 66091-1-Ig **1 Publications**



Basic Information

Catalog Number: 66091-1-Ig	GenBank Accession Number: BC003384	Purification Method: Protein G purification
Size: 150ul , Concentration: 700 µg/ml by Nanodrop and 573 µg/ml by Bradford method using BSA as the standard;	GeneID (NCBI): 2286	CloneNo.: 2H7E8
Source: Mouse	Full Name: FK506 binding protein 2, 13kDa	Recommended Dilutions: WB 1:500-1:1000 IHC 1:50-1:500
Isotype: IgG1	Calculated MW: 142 aa, 16 kDa	
Immunogen Catalog Number: AG19113	Observed MW: 16 kDa	

Applications

Tested Applications: IHC, WB, ELISA	Positive Controls:
Cited Applications: WB	WB : Human cerebellum tissue, human brain tissue, pig liver tissue, rat brain tissue
Species Specificity: human, rat, pig	IHC : human prostate cancer tissue,
Cited Species: human	
Note-IHC: suggested antigen retrieval with TE buffer pH 9.0; (*) Alternatively, antigen retrieval may be performed with citrate buffer pH 6.0	

Background Information

FKBP2 is also named as FKBP13 and belongs to the FKBP-type PPIase family. It catalyzes the cis-trans isomerization of proline imidic peptide bonds in oligopeptides. FKBP2 has a 21-amino acid signal peptide and appears to be membrane-associated(PMID:1713687). It is localized to the lumen of the endoplasmic reticulum (ER). FKBP12 and FKBP13 are highly similar proteins, of molecular masses 12 kDa and 13 kDa respectively, with approx. 43 % amino acid identity. The strong homology between FKBP12 and FKBP13 suggests that they may share similar biological functions, although, apart from rotamase activity, details relating to the function of either protein are scant(PMID:8373365).

Notable Publications

Author	Pubmed ID	Journal	Application
Jing Wen	34985411	Emerg Microbes Infect	WB

Storage

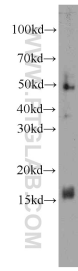
Storage:
Store at -20°C. Stable for one year after shipment.
Storage Buffer:
PBS with 0.02% sodium azide and 50% glycerol pH 7.3.
Aliquoting is unnecessary for -20°C storage

*** 20ul sizes contain 0.1% BSA

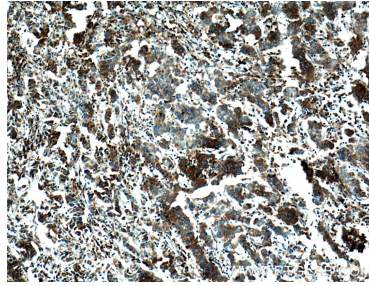
For technical support and original validation data for this product please contact:
T: 1 (888) 4PTGLAB (1-888-478-4522) (toll free in USA), or 1(312) 455-8498 (outside USA)
E: proteintech@ptglab.com
W: ptglab.com

This product is exclusively available under Proteintech Group brand and is not available to purchase from any other manufacturer.

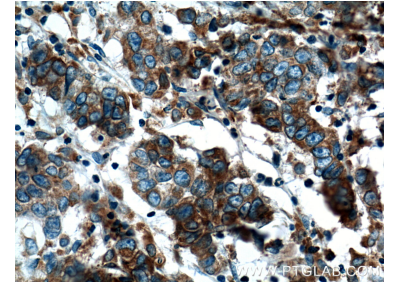
Selected Validation Data



human cerebellum tissue were subjected to SDS PAGE followed by western blot with 66091-1-Ig (FKBP2 antibody) at dilution of 1:500 incubated at room temperature for 1.5 hours.



Immunohistochemical analysis of paraffin-embedded human prostate cancer tissue slide using 66091-1-Ig (FKBP2 Antibody) at dilution of 1:200 (under 10x lens). Heat mediated antigen retrieval with Tris-EDTA buffer (pH 9.0).



Immunohistochemical analysis of paraffin-embedded human prostate cancer tissue slide using 66091-1-Ig (FKBP2 Antibody) at dilution of 1:200 (under 40x lens). Heat mediated antigen retrieval with Tris-EDTA buffer (pH 9.0).