

For Research Use Only

EPLIN Monoclonal antibody

Catalog Number: 66071-1-Ig **Featured Product**



Basic Information

Catalog Number: 66071-1-Ig	GenBank Accession Number: BC001247	Purification Method: Protein A purification
Size: 150ul , Concentration: 553 µg/ml by Bradford method using BSA as the standard;	GeneID (NCBI): 51474	CloneNo.: 6E6E6
Source: Mouse	Full Name: LIM domain and actin binding 1	Recommended Dilutions: WB 1:2000-1:10000 IHC 1:20-1:200 IF 1:20-1:200
Isotype: IgG1	Calculated MW: 85 kDa	
Immunogen Catalog Number: AG13288	Observed MW: 90 kDa, 110 kDa	

Applications

Tested Applications: IF, IHC, WB, ELISA	Positive Controls:
Species Specificity: human, rat	WB : HeLa cells, HEK-293 cells, human brain tissue, COLO 320 cells, HT-29 cells, HSC-T6 cells, ROS1728 cells
Note-IHC: suggested antigen retrieval with TE buffer pH 9.0; (*) Alternatively, antigen retrieval may be performed with citrate buffer pH 6.0	IHC : human heart tissue, IF : HeLa cells,

Background Information

EPLIN is a cytoskeletal protein that is preferentially expressed in epithelial cells and is implicated in regulation of cytoskeletal dynamics and cytokinesis. In human, there are two known isoforms, EPLIN-a and -b, generated by alternative promoter usage from a single gene. EPLIN-a expression is often down-regulated in cancerous cells and tissues. This antibody recognizes both of isoforms of EPLN.

Storage

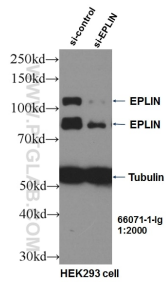
Storage:
Store at -20°C. Stable for one year after shipment.
Storage Buffer:
PBS with 0.02% sodium azide and 50% glycerol pH 7.3.
Aliquoting is unnecessary for -20°C storage

*** 20ul sizes contain 0.1% BSA

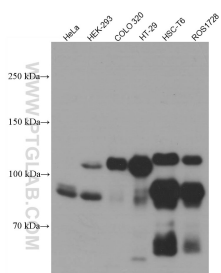
For technical support and original validation data for this product please contact:
T: 1 (888) 4PTGLAB (1-888-478-4522) (toll free in USA), or 1(312) 455-8498 (outside USA) E: proteintech@ptglab.com W: ptglab.com

This product is exclusively available under Proteintech Group brand and is not available to purchase from any other manufacturer.

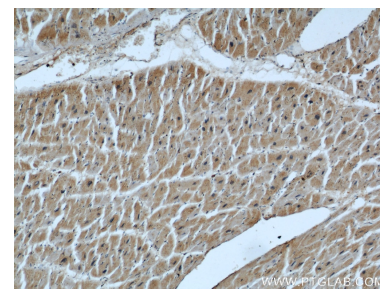
Selected Validation Data



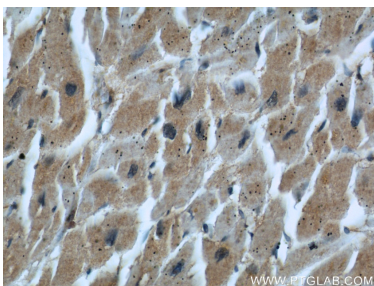
WB result of EPLIN antibody (66071-1-Ig, 1:2000) with si-Control and si-EPLIN transfected HEK293 cells.



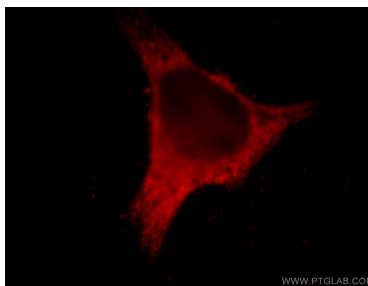
Various lysates were subjected to SDS PAGE followed by western blot with 66071-1-Ig (EPLIN antibody) at dilution of 1:5000 incubated at room temperature for 1.5 hours.



Immunohistochemical analysis of paraffin-embedded human heart using 66071-1-Ig (EPLIN antibody) at dilution of 1:50 (under 10x lens).



Immunohistochemical analysis of paraffin-embedded human heart using 66071-1-Ig (EPLIN antibody) at dilution of 1:50 (under 40x lens).



Immunofluorescent analysis of HeLa cells using 66071-1-Ig (EPLIN antibody) at dilution of 1:50 and Rhodamine-Goat anti-Mouse IgG.