

For Research Use Only

GEFT Monoclonal antibody

Catalog Number: 66012-1-Ig **1 Publications**



Basic Information

Catalog Number: 66012-1-Ig	GenBank Accession Number: BC012860	Purification Method: Protein A purification
Size: 150ul , Concentration: 1340 µg/ml by Bradford method using BSA as the standard;	GeneID (NCBI): 115557	CloneNo.: 5A11F8
Source: Mouse	Full Name: RhoA/RAC/CDC42 exchange factor	Recommended Dilutions: WB 1:500-1:2000 IHC 1:20-1:200
Isotype: IgG2a	Calculated MW: 474 aa, 53 kDa	
Immunogen Catalog Number: AG10819	Observed MW: 53 kDa, 63 kDa	

Applications

Tested Applications: IHC, WB, ELISA	Positive Controls:
Cited Applications: WB	WB: mouse skeletal muscle tissue, human brain tissue, mouse brain tissue, rat brain tissue, rat skeletal muscle tissue
Species Specificity: human, mouse, rat, pig, rabbit	IHC: human heart tissue, human brain tissue
Cited Species: human	
Note-IHC: suggested antigen retrieval with TE buffer pH 9.0; (*) Alternatively, antigen retrieval may be performed with citrate buffer pH 6.0	

Background Information

GEFT, also named as p63RhoGEF, may play a role in actin cytoskeleton reorganization in different tissues since its activation induces formation of actin stress fibers. It works as a guanine nucleotide exchange factor for Rho family of small GTPases. GEFT links specifically G alpha q/11-coupled receptors to RHOA activation. GEFT may be an important regulator of processes involved in axon and dendrite formation. In neurons seems to be an exchange factor primarily for RAC1. It is involved in skeletal myogenesis. GEFT is expressed as three isoforms (64, 53 and 68kDa).

Notable Publications

Author	Pubmed ID	Journal	Application
Behnoush Khaledian	33370472	Cancer Sci	WB

Storage

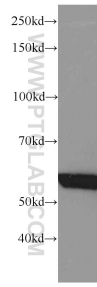
Storage:
Store at -20°C. Stable for one year after shipment.
Storage Buffer:
PBS with 0.02% sodium azide and 50% glycerol pH 7.3.
Aliquoting is unnecessary for -20°C storage

*** 20ul sizes contain 0.1% BSA

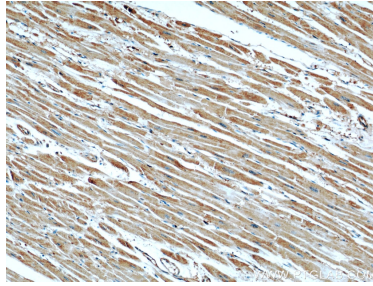
For technical support and original validation data for this product please contact:
T: 1 (888) 4PTGLAB (1-888-478-4522) (toll free in USA), or 1(312) 455-8498 (outside USA)
E: proteintech@ptglab.com
W: ptglab.com

This product is exclusively available under Proteintech Group brand and is not available to purchase from any other manufacturer.

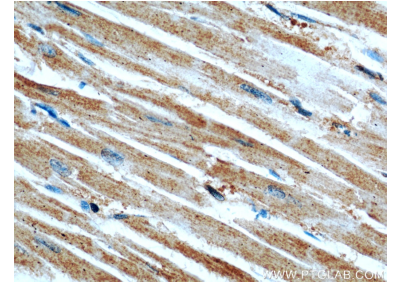
Selected Validation Data



mouse skeletal muscle tissue were subjected to SDS PAGE followed by western blot with 66012-1-Ig (GEFT antibody) at dilution of 1:1000 incubated at room temperature for 1.5 hours.



Immunohistochemical analysis of paraffin-embedded human heart using 66012-1-Ig(GEFT antibody) at dilution of 1:50 (under 10x lens).



Immunohistochemical analysis of paraffin-embedded human heart using 66012-1-Ig(GEFT antibody) at dilution of 1:50 (under 40x lens).