

For Research Use Only

PLS1 Polyclonal antibody

Catalog Number: 55212-1-AP

Featured Product

1 Publications



Basic Information

Catalog Number: 55212-1-AP	GenBank Accession Number: NM_002670	Purification Method: Antigen affinity purification
Size: 150ul , Concentration: 400 µg/ml by Nanodrop and 193 µg/ml by Bradford method using BSA as the standard;	GeneID (NCBI): 5357	Recommended Dilutions: WB 1:500-1:2400 IHC 1:20-1:200
Source: Rabbit	Full Name: plastin 1 (I isoform)	
Isotype: IgG	Calculated MW: 70 kDa	
	Observed MW: 70 kDa	

Applications

Tested Applications:
IHC, WB, ELISA

Cited Applications:
IHC, WB

Species Specificity:
human, mouse, rat

Cited Species:
human

Note-IHC: suggested antigen retrieval with TE buffer pH 9.0; (*) Alternatively, antigen retrieval may be performed with citrate buffer pH 6.0

Positive Controls:

WB : mouse small intestine tissue, COLO 320 cells

IHC : human colon tissue, human kidney tissue

Background Information

PLS1, also named as I-plastin and Plastin-1, is an actin-bundling protein in the absence of calcium. It is intestine-specific plastin. This antibody is specific to PLS1. This antibody is specific to PLS1. It has no cross reaction to PLS3.

Notable Publications

Author	Pubmed ID	Journal	Application
Tongtong Zhang	32350953	Cancer Sci	WB, IHC

Storage

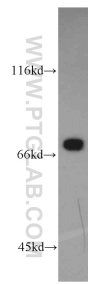
Storage:
Store at -20°C.
Storage Buffer:
PBS with 0.02% sodium azide and 50% glycerol pH 7.3.
Aliquoting is unnecessary for -20°C storage

*** 20ul sizes contain 0.1% BSA

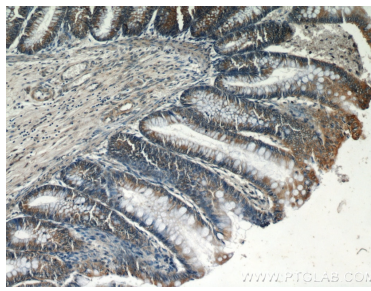
For technical support and original validation data for this product please contact:
T: 1 (888) 4PTGLAB (1-888-478-4522) (toll free in USA), or 1(312) 455-8498 (outside USA)
E: proteintech@ptglab.com
W: ptglab.com

This product is exclusively available under Proteintech Group brand and is not available to purchase from any other manufacturer.

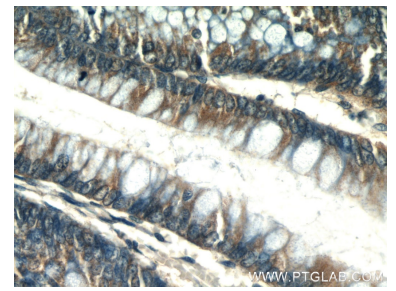
Selected Validation Data



mouse small intestine tissue were subjected to SDS PAGE followed by western blot with 55212-1-AP (PLS1 antibody) at dilution of 1:1200 incubated at room temperature for 1.5 hours.



Immunohistochemical analysis of paraffin-embedded human colon using 55212-1-AP (PLS1 antibody) at dilution of 1:50 (under 10x lens).



Immunohistochemical analysis of paraffin-embedded human colon using 55212-1-AP (PLS1 antibody) at dilution of 1:50 (under 40x lens).