

For Research Use Only

PPP1R13L Polyclonal antibody

Catalog Number: 51141-1-AP **2 Publications**



Basic Information

Catalog Number: 51141-1-AP	GenBank Accession Number: BC032298	Purification Method: Antigen affinity purification
Size: 150ul, Concentration: 160 µg/ml by Nanodrop and 133 µg/ml by Bradford method using BSA as the standard;	GeneID (NCBI): 10848	Recommended Dilutions: WB 1:500-1:2000 IHC 1:50-1:500
Source: Rabbit	Full Name: protein phosphatase 1, regulatory (inhibitor) subunit 13 like	
Isotype: IgG	Calculated MW: 45 kDa, 89 kDa	
Immunogen Catalog Number: AG0635	Observed MW: 110 kDa	

Applications

Tested Applications: IHC, WB, ELISA	Positive Controls: WB : human heart tissue, HEK-293 cells, mouse testis tissue IHC : human breast cancer tissue,
Cited Applications: IF, IHC, WB	
Species Specificity: human, mouse	
Cited Species: human	

Note-IHC: suggested antigen retrieval with TE buffer pH 9.0; (*) Alternatively, antigen retrieval may be performed with citrate buffer pH 6.0

Background Information

Notable Publications

Author	Pubmed ID	Journal	Application
Joseph Park	33432171	Nat Med	IF
Mi Zhou	35717675	Adv Sci (Weinh)	WB, IHC

Storage

Storage:
Store at -20°C.
Storage Buffer:
PBS with 0.02% sodium azide and 50% glycerol pH 7.3.
Aliquoting is unnecessary for -20°C storage

***** 20ul sizes contain 0.1% BSA**

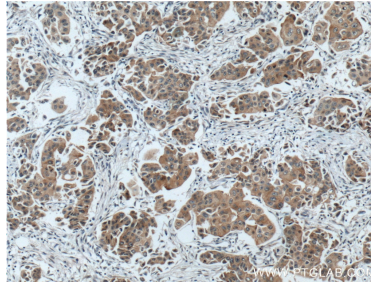
For technical support and original validation data for this product please contact:
T: 1 (888) 4PTGLAB (1-888-478-4522) (toll free in USA), or 1(312) 455-8498 (outside USA) E: proteintech@ptglab.com W: ptglab.com

This product is exclusively available under Proteintech Group brand and is not available to purchase from any other manufacturer.

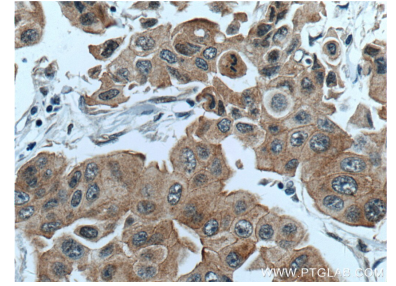
Selected Validation Data



human heart tissue were subjected to SDS PAGE followed by western blot with 51141-1-AP (PPP1R13L antibody) at dilution of 1:200 incubated at room temperature for 1.5 hours.



Immunohistochemical analysis of paraffin-embedded human breast cancer tissue slide using 51141-1-AP (PPP1R13L antibody) at dilution of 1:200 (under 10x lens. Heat mediated antigen retrieval with Tris-EDTA buffer (pH 9.0).



Immunohistochemical analysis of paraffin-embedded human breast cancer tissue slide using 51141-1-AP (PPP1R13L antibody) at dilution of 1:200 (under 40x lens. Heat mediated antigen retrieval with Tris-EDTA buffer (pH 9.0).