

For Research Use Only

SGLT1 Polyclonal antibody

Catalog Number: 30861-1-AP



Basic Information

Catalog Number:

30861-1-AP

Size:

150ul , Concentration: 450 µg/ml by Nanodrop;

Source:

Rabbit

Isotype:

IgG

Immunogen Catalog Number:

AG29338

GenBank Accession Number:

NM_000343

GeneID (NCBI):

6523

UNIPROT ID:

P13866

Full Name:

solute carrier family 5 (sodium/glucose cotransporter), member 1

Calculated MW:

73 kDa

Observed MW:

73 kDa

Purification Method:

Antigen affinity purification

Recommended Dilutions:

WB 1:500-1:1000

IP 0.5-4.0 ug for 1.0-3.0 mg of total protein lysate

Applications

Tested Applications:

WB, IP, ELISA

Species Specificity:

Human, mouse

Positive Controls:

WB : mouse colon tissue, mouse kidney tissue

IP : mouse kidney tissue,

Background Information

SLC5A1, also known as SGLT1, is a sodium-dependent glucose transporter (SGLT) family member. SGLT1 couples sugar transport to Na⁺ gradients across the intestinal brush border (PMID: 8563765). SGLT1 mediates active glucose and galactose absorption in the intestine and renal glucose scavenging. Mutations in SGLT1 cause glucose-galactose malabsorption (GGM) syndrome (PMID: 34880492). SGLT1 is expressed in intestine and endometrial cells (PMID: 2490366, 28974690).

Storage

Storage:

Store at -20°C. Stable for one year after shipment.

Storage Buffer:

PBS with 0.02% sodium azide and 50% glycerol pH 7.3.

Aliquoting is unnecessary for -20°C storage

*** 20ul sizes contain 0.1% BSA

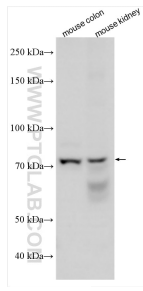
For technical support and original validation data for this product please contact:

T: 1 (888) 4PTGLAB (1-888-478-4522) (toll free in USA), or 1(312) 455-8498 (outside USA)

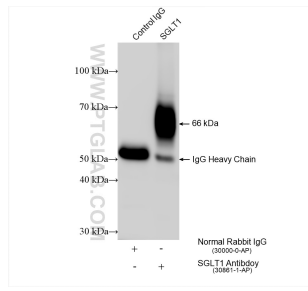
E: proteintech@ptglab.com
W: ptglab.com

This product is exclusively available under Proteintech Group brand and is not available to purchase from any other manufacturer.

Selected Validation Data



Various lysates were subjected to SDS PAGE followed by western blot with 30861-1-AP (SGLT1 antibody) at dilution of 1:800 incubated at room temperature for 1.5 hours.



IP result of anti-SGLT1 (IP:30861-1-AP, 4ug; Detection:30861-1-AP 1:400) with mouse kidney tissue lysate 2160 ug.