

For Research Use Only

SSR3 Polyclonal antibody

Catalog Number: 30851-1-AP



Basic Information

Catalog Number: 30851-1-AP	GenBank Accession Number: BC017203	Purification Method: Antigen affinity Purification
Size: 150ul , Concentration: 300 µg/ml by Nanodrop;	GeneID (NCBI): 6747	Recommended Dilutions: WB 1:5000-1:50000
Source: Rabbit	Full Name: signal sequence receptor, gamma (translocon-associated protein gamma)	
Isotype: IgG	Calculated MW: 185 aa, 21 kDa	
Immunogen Catalog Number: AG28130	Observed MW: 19 kDa	

Applications

Tested Applications: WB, ELISA	Positive Controls: WB : HeLa cells, U-87 MG cells, mouse testis tissue, rat testis tissue
Species Specificity: Human, mouse, rat	

Background Information

Mammalian TRAP is a heterotetrameric membrane protein complex which comprised of four membrane proteins/subunits: alpha, beta, gamma, and delta. SSR3 is also known as translocon-associated protein subunit gamma (TRAPG). The signal sequence receptor (SSR) is a glycosylated endoplasmic reticulum (ER) membrane receptor associated with protein translocation across the ER membrane. SSR3 assumes a central position in the mammalian TRAP complex, binding to the ribosome on the cytosolic face of the ER membrane and coordinating the remaining TRAP subunits with the ribosome and the other translocon components.

Storage

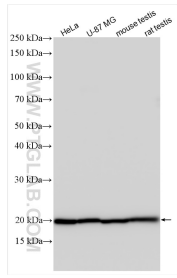
Storage:
Store at -20°C. Stable for one year after shipment.
Storage Buffer:
PBS with 0.02% sodium azide and 50% glycerol pH 7.3.
Aliquoting is unnecessary for -20°C storage

*** 20ul sizes contain 0.1% BSA

For technical support and original validation data for this product please contact:
T: 1 (888) 4PTGLAB (1-888-478-4522) (toll free in USA), or 1(312) 455-8498 (outside USA)
E: proteintech@ptglab.com
W: ptglab.com

This product is exclusively available under Proteintech Group brand and is not available to purchase from any other manufacturer.

Selected Validation Data



Various lysates were subjected to SDS PAGE followed by western blot with 30851-1-AP (SSR3 antibody) at dilution of 1:30000 incubated at room temperature for 1.5 hours.